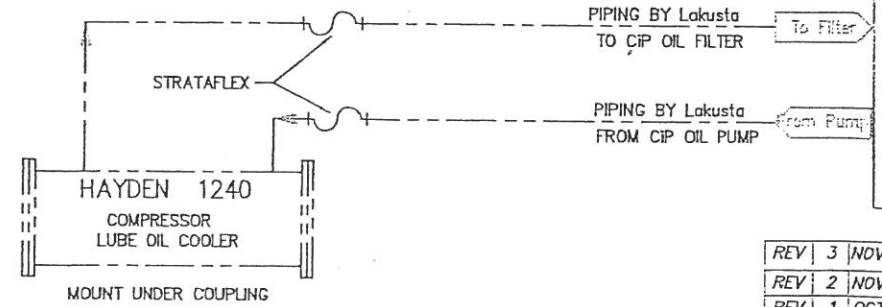


CUSTOMER SUPPLIED
RELIEF, SET @ 350#
REQUIRED FOR SUCTION

CUSTOMER TO SUPPLY
SUCTION CONTROL VALVE
CONTROLLER MTD I/S BLDG
BY LAKUSTA

PROJECT NAME: Harmattan
DATE: Nov 27/06 RB/RS
PROJECT #: 65037 Prosplex

PACKING VENT/DRAIN & OIL DRAIN
CUSTOMER CONNECTION TO VENTED STORAGE TANK



VENDOR TO PROCEED AS NOTED
☒ APPROVED FOR CONSTRUCTION.
☐ APPROVED FOR CONST. AS NOTED
☐ REVISE AND RESUBMIT AS NOTED

SIGNED: *[Signature]*
DATE: Nov 29, 2006

REV 3	NOV 24/06	PER CUSTOMER REQUESTS
REV 2	NOV 17/06	PER CUSTOMER REQUESTS
REV 1	OCT 18/06	PER CUSTOMER REQUESTS

UNLESS OTHERWISE NOTED DIMENSIONS ARE IN INCHES AND TOLERANCES:	
DESIGN	1/8"
MANUFACTURE	1/16"
WELDING	1/8"
THREADS	1/16"
ALL MACHINED PARTS TO BE 303 STAINLESS STEEL UNLESS OTHERWISE NOTED	
BREAK SHARP EDGES FOR OR CHAMFER	
SIGNATURE	DATE
DRAWN BY: SH	10-2-06
CHK BY:	
APPD BY:	
CUST. APPR:	
DO NOT SCALE PRINT	
THIRD ANGLE PROJECTION	



J:\2432 Lakusta Motor\2432fs01.dwg 10/9/2006 2:41pm Stephen Harding

NOTICE: THIS DOCUMENT CONTAINS PROPRIETARY INFORMATION AND IT SHALL NOT BE USED OR REPRODUCED OR CONTENTS DISCLOSED IN WHOLE OR IN PART WITHOUT PRIOR WRITTEN CONSENT FROM SCREW COMPRESSOR SYSTEMS INC.

ELECTRIC MOTOR W/CIP PXT-2
[6" / 4"] P&ID

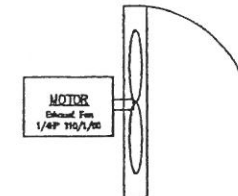
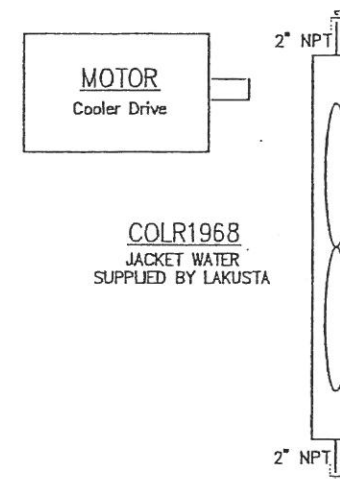
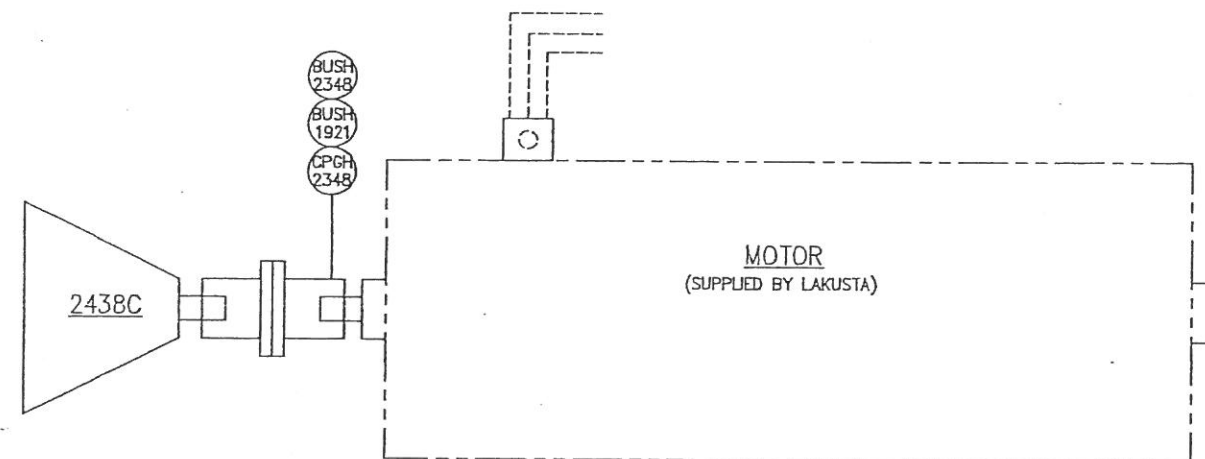
JOB NO.	SIZE	DWG. NO.	REV.
2432C	D	FS-01	3

SCALE: NONE FILE NO: 2432fs01 SHEET 1 OF 2

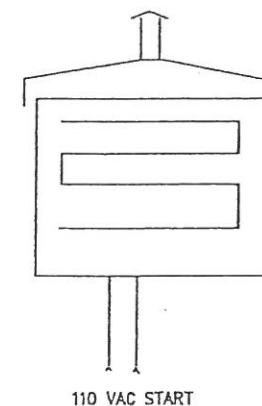
(MOTOR BY LAKUSTA)
 ABB 125 BHP, INVERTER PLUS 444T
 208-230/480, 60Hz, 3 Ph, 1800 RPM
 TEFC HI EFFICIENCY FOR VFD 4:1 RATIO
 CSA CLASS 1 GR A,B,C,D DIV II
 Class F insulation, Class B Temperature Rise
 Inverter Duty meets NEMA MG1 Part 31
 1.15 SF, 1.0 on VFD

(MOTOR BY LAKUSTA)
 ABB 7.5 bhp, INVERTER PLUS 254T
 208-230/480, 60Hz, 3 Ph, 1800 RPM
 TEFC HI EFFICIENCY FOR VFD 4:1 RATIO
 CSA CLASS 1 GR A,B,C,D DIV II
 Class F insulation, Class B Temperature Rise
 Inverter Duty meets NEMA MG1 Part 31
 1.15 SF, 1.0 on VFD

COOLER
 JACKET WATER COOLER
 NOT IN SERVICE



CCI THERMAL CATALYTIC HEATER
 W2424, 12 VDC NATURAL GAS
 xPAD with SSOV
 912 REG 11\"/>



FISHER 3/4\"/>

PROJECT NAME:
 DATE: Nov 27/06 RS/RB
 PROJECT #: 66037 Prospect

VENDOR TO PROCEED AS NOTED
☒ APPROVED FOR CONSTRUCTION.
☐ APPROVED FOR CONST. AS NOTED
☐ REVISE AND RESUBMIT AS NOTED
 SIGNED: *[Signature]*
 DATE: Nov 29/2006

REV 3 NOV 24/06 PER CUSTOMER REQUESTS
 REV 2 NOV 17/06 PER CUSTOMER REQUESTS
 REV 1 OCT 18/06 PER CUSTOMER REQUESTS

UNLESS OTHERWISE NOTED DIMENSIONS
 ARE IN INCHES AND TOLERANCES:
 DEC 2PL DEC 3PL ANGLE RUS FIN 64
 ± .010 ± .005 ± .1\"/>

SIGNATURE	DATE
DRAWN BY: SH	10-2-06
CHK BY:	
APPD BY:	
CUST. APPR:	
DO NOT SCALE PRINT	
THIRD ANGLE	



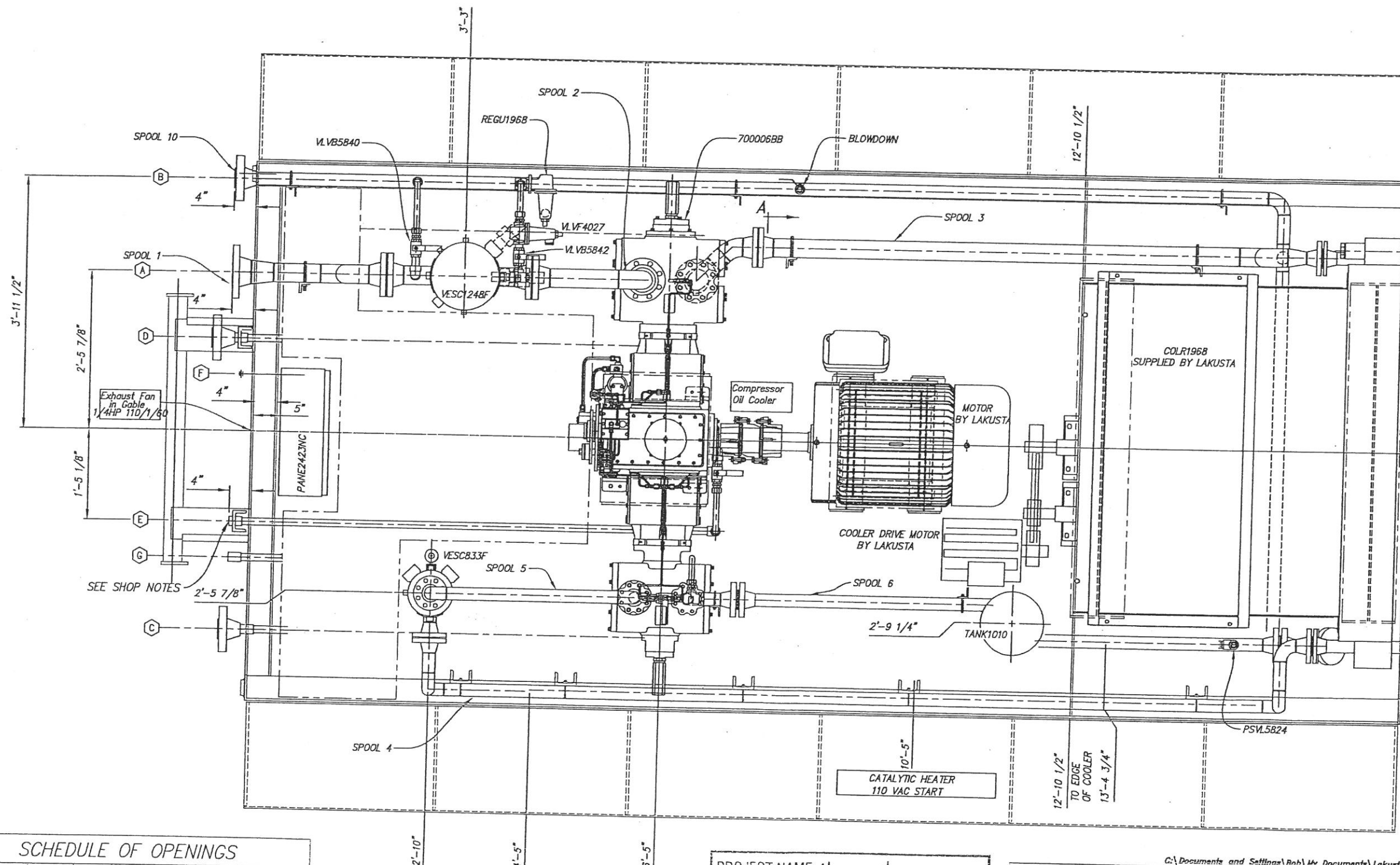
J:\2432 Lakusta Motor\2432Is01.dwg 10/9/2006 2:41pm Stephen.Harding

NOTICE: THIS DOCUMENT CONTAINS PROPRIETARY INFORMATION AND IT SHALL NOT BE USED OR REPRODUCED OR CONTENTS DISCLOSED IN WHOLE OR IN PART WITHOUT PRIOR WRITTEN CONSENT FROM SCREW COMPRESSOR SYSTEMS INC.

ELECTRIC MOTOR W/CIP PXT-2
 [6\"/>

JOB NO. 2432C	SIZE D	DWG. NO. FS-02	REV. 3
------------------	-----------	-------------------	-----------

AREAS ENCLOSE
IN RECTANGLES
REQUIRES GRATING
ABOVE THE PIPE/TUBING



SCHEDULE OF OPENINGS				
MARK	SIZE	RATING	TYPE	SERVICE
(A)	4"	300#	RFWN	CUSTOMER INLET
(B)	2"	900#	RFWN	CUSTOMER OUTLET
(C)	2"	150#	RF	FUEL GAS TO HEATER - 50 PSIG REQ'D
(D)	2"	150#	RF	SCRUBBER DRAIN
(E)	1"	3000#	CPLG	PACKING VENT & OIL DRAIN CONNECTION
(F)	1/2"	SST	UNION	INSTRUMENT AIR SUPPLY - 50 PSIG REQ'D
(G)	1"	3000#	CPLG	PSV AND BLOWDOWN OUTLET

REVIEW ALL SHOP
NOTES BEFORE FABRICATION

PROJECT NAME:	Harmattan
DATE:	Nov 20/06 RS/RB
PROJECT #:	65037 Prospect

REV	2	NOV 17/06	PER CUSTOMER REQUESTS
REV	1	OCT 18/06	PER CUSTOMER REQUESTS
REV	0	10-12-06	RELEASED FOR PRODUCTION

UNLESS OTHERWISE NOTED DIMENSIONS
ARE IN INCHES AND TOLERANCES:

DEC 2PL ± .010	DEC 3PL ± .005	ANGLE ± 1°	RMS FIN	64 ✓
-------------------	-------------------	---------------	---------	---------

ALL MACHINED RADII TO BE .030R.
BREAK SHARP EDGES .10R OR CHAMFER

SIGNATURE	DATE
DRAWN BY: SH	10-02-04

CHK BY:	
APPD BY:	

CUST. APPR: _____

DO NOT SCALE PRINT



COMPRESSION SYSTEMS
5725 Bird Creek Ave.
Catoosa, OK 74015
(918) 266-3330
Fax: (918) 971-1818

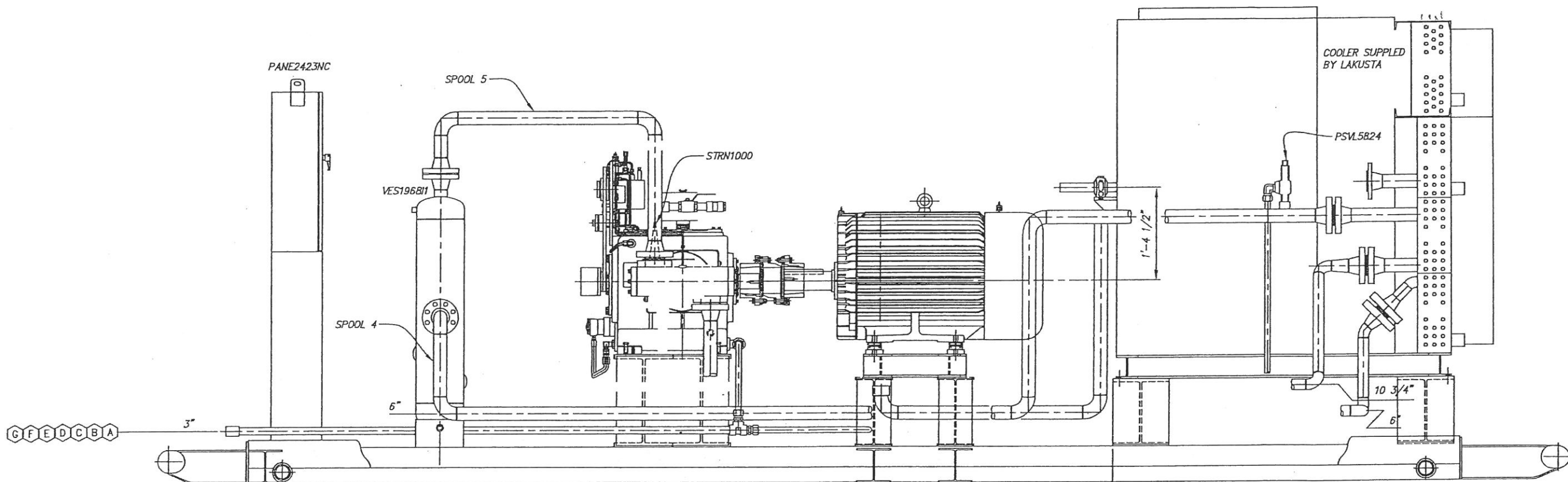
C:\Documents and Settings\Bob\My Documents\Lakusta\2342C Motor\2432pv01.dwg 10/10/2006 10:45am Bob Tot

NOTICE: THIS DOCUMENT CONTAINS PROPRIETARY INFORMATION AND IT SHALL NOT BE USED OR REPRODUCED OR CONTENTS DISCLOSED IN WHOLE OR IN PART WITHOUT PRIOR WRITTEN CONSENT FROM SCREW COMPRESSOR SYSTEMS INC.

ELECTRIC MOTOR W/CIP PXT-2 [6"/4"]
PLAN VIEW

JOB NO. 2432C	SIZE D	DWG. NO. PV-01	REV. A
------------------	-----------	-------------------	-----------

SCALE: 1:10	FILE NO.: 2432py01	SHEET 1 OF 3
-------------	--------------------	--------------



PROJECT NAME:
 DATE: *Oct 20/2006* R.B.
 PROJECT #: *65037* *Proper*

VENDOR TO PROCEED AS NOTED
☒ APPROVED FOR CONSTRUCTION.
☐ APPROVED FOR CONST. AS NOTED
☐ REVISE AND RESUBMIT AS NOTED
 SIGNED: *[Signature]*
 DATE: *Nov 6, 06*

REVIEW ALL SHOP
 NOTES BEFORE FABRICATION

REV	1	OCT 18/06	PER CUSTOMER REQUESTS
REV	0	10-12-06	RELEASED FOR PRODUCTION

UNLESS OTHERWISE NOTED DIMENSIONS ARE IN INCHES AND TOLERANCES:
 DEC 2PL DEC 3PL ANGLE RAS FIN BA
 ± .010 ± .005 ± 1°
 ALL MACHINED RAS TO BE .001
 BREAK SHARP EDGES .10R OR CHAMFER

SIGNATURE: _____ DATE: _____
 DRAWN BY: SH 10-02-06
 CHK BY: _____
 APPD BY: _____
 CUST. APPR: _____

DO NOT SCALE PRINT
 THIRD ANGLE PROJECTION

C:\Documents and Settings\Bob\My Documents\Lakusta\2342C Motor\2432pv01.dwg 10/10/2006 10:46am Bob.Tai

NOTICE: THIS DOCUMENT CONTAINS PROPRIETARY INFORMATION AND IT SHALL NOT BE USED OR REPRODUCED OR CONTENTS DISCLOSED IN WHOLE OR IN PART WITHOUT PRIOR WRITTEN CONSENT FROM SCREW COMPRESSOR SYSTEMS INC.

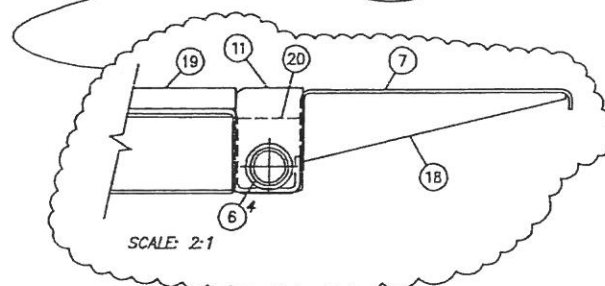
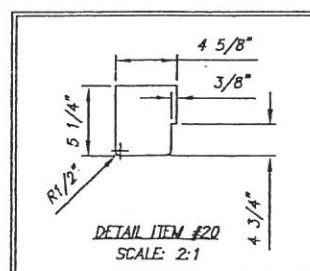
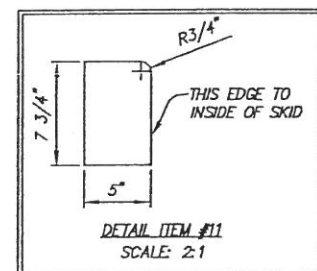
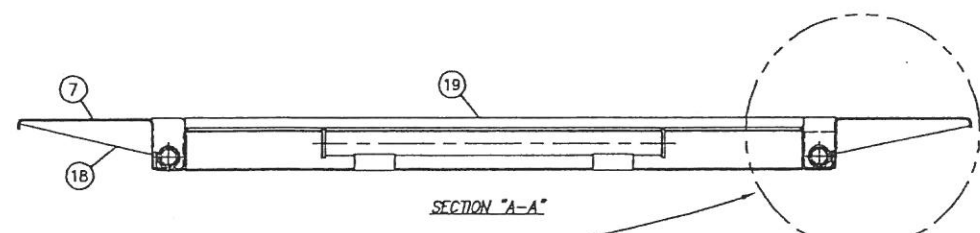
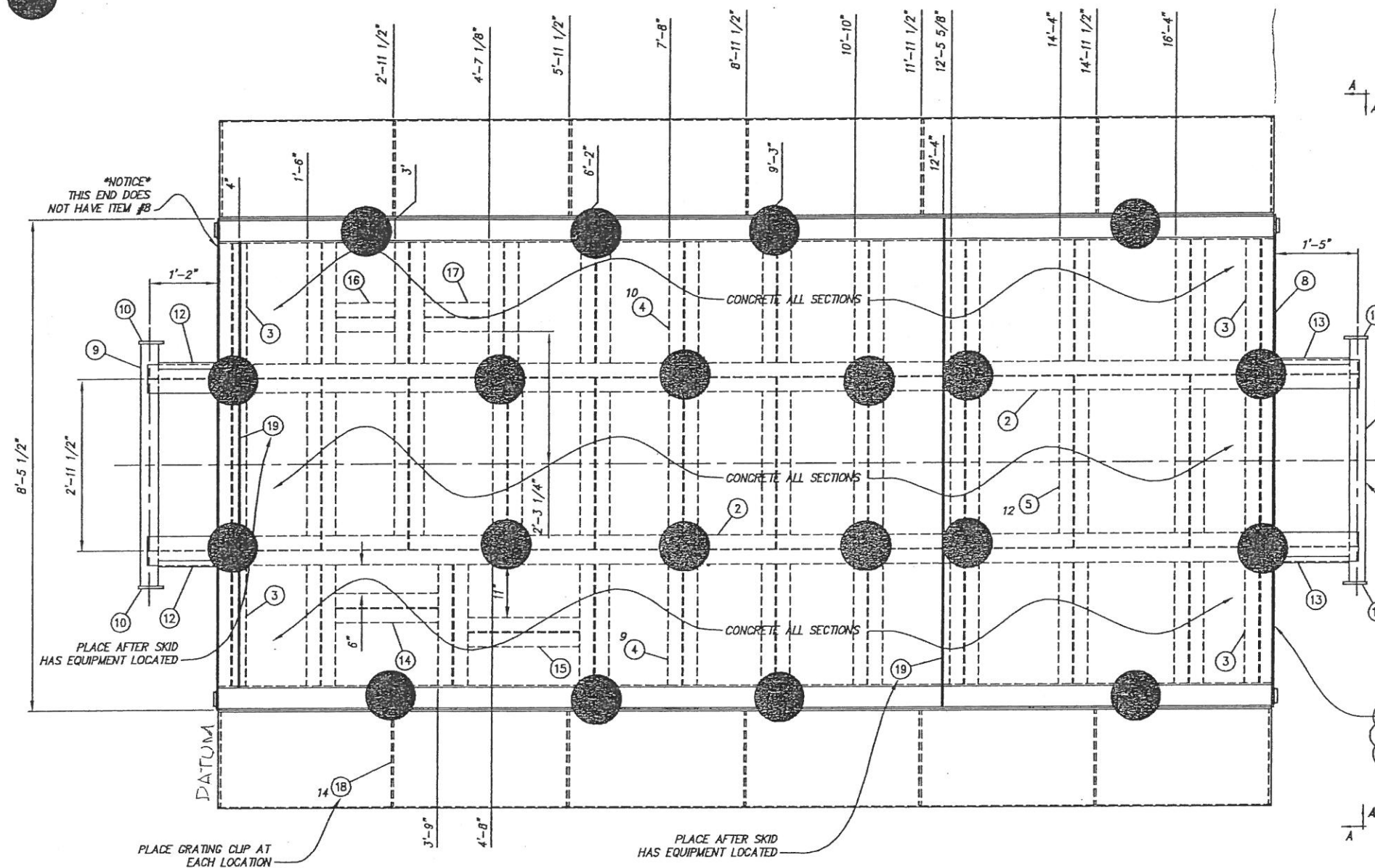
SCS
 COMPRESSION SYSTEMS
 5725 Bird Creek Ave.
 Colton, OK 74015
 (918) 266-3330
 Fax (918) 971-1818

**ELECTRIC MOTOR W/CIP PXT-2 [6"/4"]
 FRONT ELEVATION VIEW**

JOB NO. 2432C	SIZE D	DWG. NO. EL-01	REV. 1
-------------------------	------------------	--------------------------	------------------

SCALE: 1:10 FILE NO.: 2432pv01 SHEET 2 OF 4

MINIMUM SUGGESTED PILE LOCATIONS



REV	ITEM	QTY	DESCRIPTION	MATL	WT.
1	1	1	BENT METAL SKID PLATE 9'-8" X 18'-0" LG	SKID3118	2,664
2	2	2	WIDE FLANGE: 6 x 15# x 20'-10 1/4" LG [BEFORE DRAW IS CUT]	WFBM3194	618
3	4	4	WIDE FLANGE: 6 x 15# x 27 7/8" LG	WFBM3194	139
4	19	19	WIDE FLANGE: 6 x 15# x 25" LG	WFBM3194	594
5	12	12	WIDE FLANGE: 6 x 15# x 35 1/4" LG (COPE BOTH ENDS)	WFBM3194	529
6	4	4	PHOENIX FLANGE: SERIES #285	FLNG5833	3
7	2	2	BENT WALKWAY: 3/8" x 6" x 15 1/4" LG x 18'-0" LG	SKID1060	806
8	1	1	FLAT BAR: 3/8" x 1 1/2" x 7'-7 7/8" LG	BARF2897	29
9	2	2	PIPE: 3" SCH STD (216) X 4'-2" LG	PIPE5195	64
10	4	4	DRAW BAR CAP: 3" DRAW BAR CAP [DWG: DRAWBAR-3]	SKID7003	17
11	4	4	FLAT BAR: 3/8" x 5" x 7 3/4" LG	BARF4231	16
12	2	2	PIPE: 1" XHY (.179) x 12 1/4" LG	PIPE4388	9
13	2	2	PIPE: 1" XHY (.179) x 15 1/4" LG	PIPE4388	12
14	1	1	WIDE FLANGE: 6 x 15# x 21" LG	WFBM3194	52
15	1	1	WIDE FLANGE: 6 x 15# x 23" LG	WFBM3194	28
16	1	1	WIDE FLANGE: 6 x 15# x 12" LG	WFBM3194	15
17	1	1	WIDE FLANGE: 6 x 15# x 13 1/8" LG	WFBM3194	16
18	14	14	WALKWAY GUSSET: 5 x 19 1/2"	SKID1060A	112
19	2	2	FLAT BAR: 3/8" x 1 1/2" x 7'-8" LG	BARF2897	29
20	2	2	FLAT BAR: 3/8" THK x 5" x 5 1/4" LG (SEE DETAIL)	BARF4231	6
21			CONCRETE: LIGHT W/ FIBER MESH (2 1/2 CUBIC YARDS)		9,990

ESTIMATED WEIGHT: 15,750#

NOTE: MEASURE DISTANCE BETWEEN ITEM #2 AND INSIDE EDGE OF BENT METAL FOR ACTUAL LENGTH.

PROJECT NAME:

DATE: Oct 13/06

RS/RB

PROJECT #: 65037

Prospex

VENDOR TO PROCEED AS NOTED

- ☐ APPROVED FOR CONSTRUCTION.
- ☐ APPROVED FOR CONST. AS NOTED
- ☐ REVISE AND RESUBMIT AS NOTED

SIGNED: _____

DATE: _____

WELD NOTES:

- NOTE ALL LOCATIONS MARKED WITH THIS COLOR LINE NEEDS TO BE SEAL WELDED TO THE DECK PLATE.

ALL OTHER BEAMS MUST BE 4" x 6" SKIP WELDED.

WELD NOTES:

- FLUX CORE WELDING PROCESS USED.
- MIG STRINGER USED FOR ANY GAPS PRIOR TO FLUX CORE.
- ALL WELDERS QUALIFIED TO 1G POSITION UP TO 3/4" MATL.

UNLESS OTHERWISE NOTED DIMENSIONS ARE IN INCHES AND TOLERANCES:
 DEC 3PL DEC 3PL ANGLE RAS PM
 ± .010 ± .005 ± .1"

SIGNATURE: _____ DATE: 8-15-05

DRAWN BY: DLB

CHK BY: _____

APPRO BY: _____

CUST. APPR: _____

DO NOT SCALE PRINT

THIRD ANGLE PROJECTION



G:\2317C Lakusta\2317sk01.dwg 8/31/2005 9:17am Stephen Harding

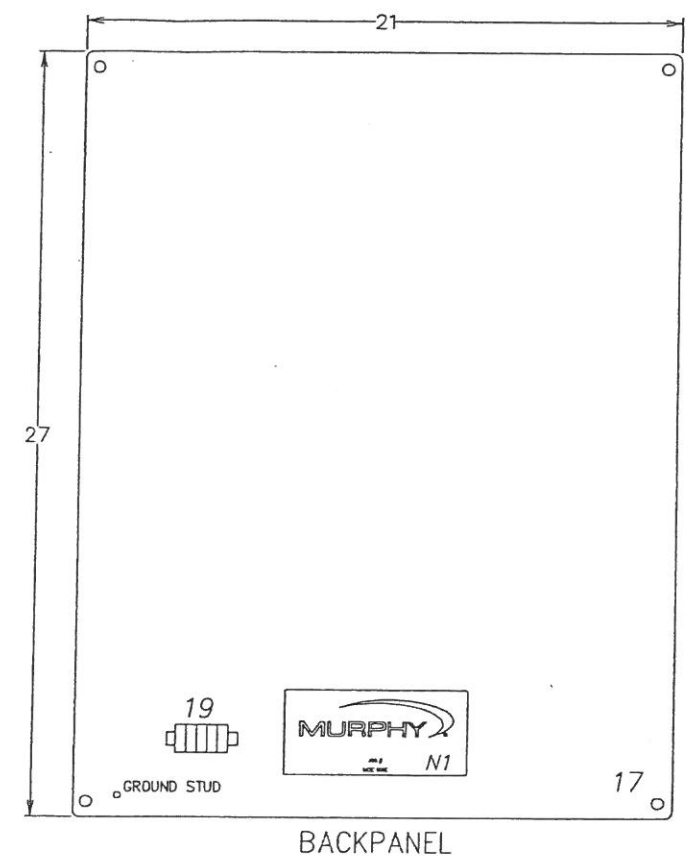
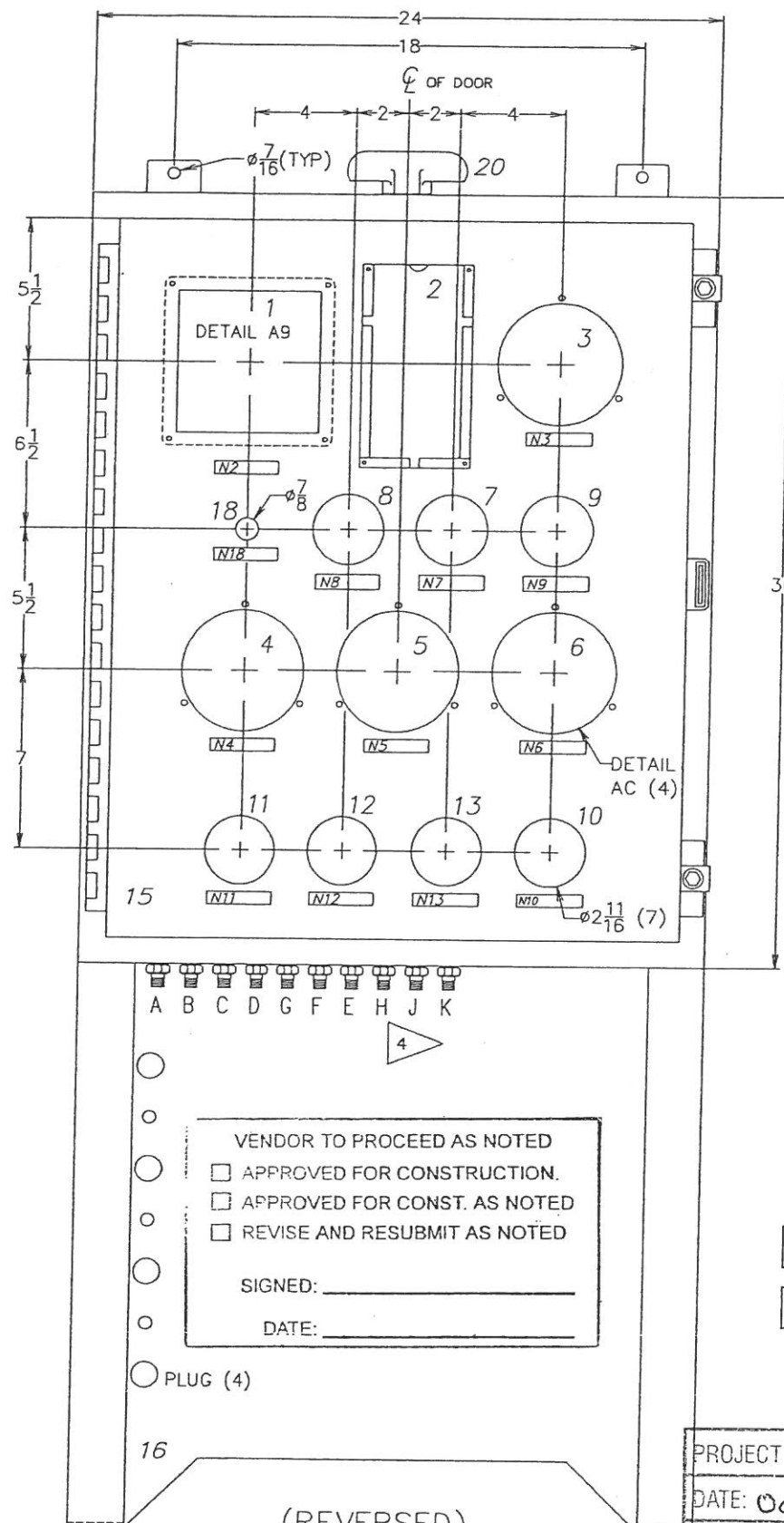
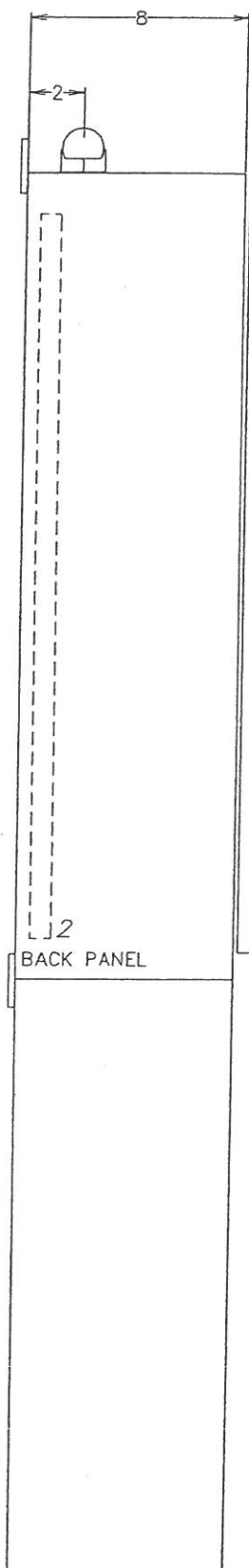
NOTICE: THIS DOCUMENT CONTAINS PROPRIETARY INFORMATION AND IT SHALL NOT BE USED OR REPRODUCED OR CONTENTS DISCLOSED IN WHOLE OR IN PART WITHOUT PRIOR WRITTEN CONSENT FROM SCREW COMPRESSOR SYSTEMS INC.

CIP PXT-2 / CUMMINS G8.3
 9'-8" x 18'-0" w/ CONCRETE

JOB NO. 2317C SIZE D DWG. NO. SK-01

SCALE: 1:13 FILE NO: 2317sk01 SHEET 1 OF 1

REV 0 8-15-05 RELEASED FOR PRODUCTION



- NOTES:
- NUMBERS CORRESPOND TO PANEL LEGEND ON DRAWING NO. 50-30-6090A
 - ENCLOSURE: ENC-P-H-A302408LP-MR
STAND: STD-P-22X24X9-4PDF-MR
SUBPANEL: SUB-H-A-30P24 OR ELT E-30P24
 - CUSTOMER REQUEST BULKHEAD LAYOUT USE 1/4 FNPT BULKHEADS
 - INSTALL FLEX HOSE ON BULKHEADS H, J, & K

VENDOR TO PROCEED AS NOTED

☐ APPROVED FOR CONSTRUCTION.

☐ APPROVED FOR CONST. AS NOTED

☐ REVISE AND RESUBMIT AS NOTED

SIGNED: _____

DATE: _____

PROJECT NAME: Harmattan

DATE: Oct 13/06 RS/RB

PROJECT #: 65037 Prospex

MATERIAL
ENCLOSURE: 14 GAGE STEEL
STAND: 12 GAGE STEEL

FINISH
ENCLOSURE & STAND
MURPHY RED

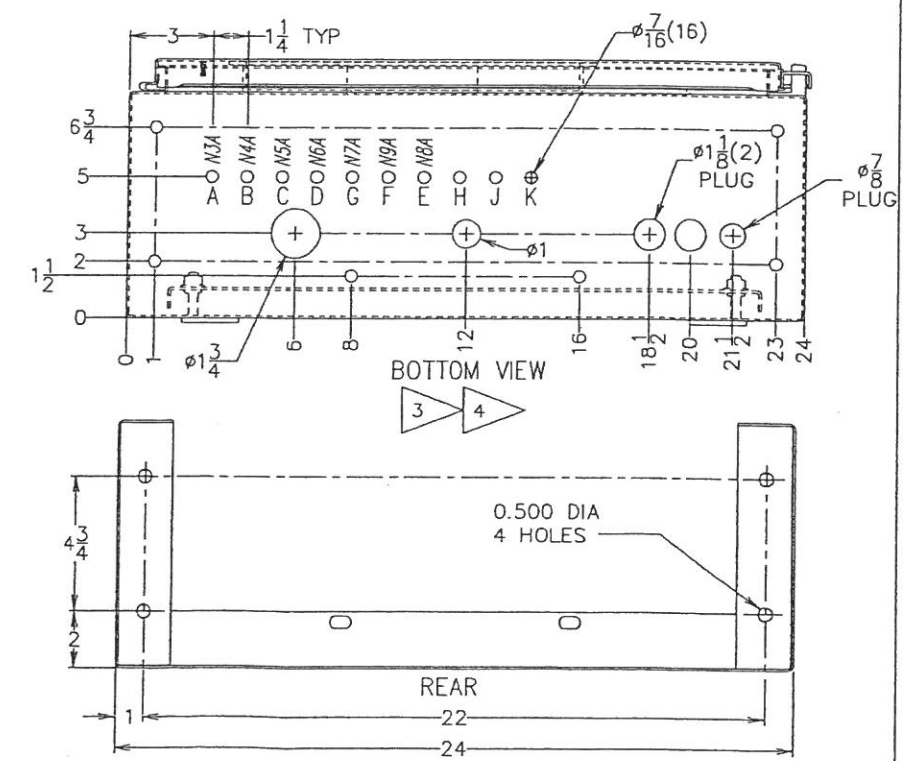
UNLESS OTHERWISE NOTED
DIMENSIONS ARE IN INCHES
.xx ±0.30 ANGLES ±2°
.xxx ±0.10 ✓125
FRACTIONS ±1/16

0	FIELD CHANGES	25 SEP 06	DATE	CHK BY	SHEET 1 OF 1
A	AS BUILT	05-25-06	DATE	CHK BY	SHEET 1 OF 1
REV.	DESCRIPTION	DCN No.	DATE	CHK BY	SHEET 1 OF 1

THIS DOCUMENT, DRAWING, SKETCH, OR SCHEMATIC PLAN IS THE PROPERTY OF FRANK W. MURPHY MFR. AND COVERS SWITCHGEAR®, CONTROLS AND/OR CIRCUIT ON WHICH U.S. & FOREIGN PATENTS HAVE BEEN ISSUED OR APPLIED FOR. NO PART MAY BE REPRODUCED OR USED WITHOUT THE CONSENT OF THE OWNER.

MURPHY MFR. IS NOT RESPONSIBLE FOR COPIES OF THIS DRAWING NOT HAND SIGNED BY OUR ENGINEERS.

INDIVIDUAL NAMEPLATE SCHEDULE					
QTY.	TAG #	LETTERS/TAG	DESCRIPTION	PART #	
1	N1	W/B	LARGE SERIAL NUMBER TAG	502252435	
1	N2	W/B	PANEL No. (See Order)	50225266	
1	N3	W/B	SUCTION > PRESSURE	50225266	
1	N4	W/B	1ST INTERSTAGE > PRESSURE	50225266	
1	N5	W/B	2ND INTERSTAGE > PRESSURE	50225266	
1	N6	W/B	DISCHARGE > PRESSURE	50225266	
1	N9	W/B	COMPRESSOR OIL > PRESSURE	50225266	
1	N11	W/B	1ST STAGE DISCHARGE > TEMPERATURE	50225266	
1	N12	W/B	2ND STAGE DISCHARGE > TEMPERATURE	50225266	
1	N13	W/B	3RD STAGE DISCHARGE > TEMPERATURE	50225266	
1	N18	W/B	PUSH TO START	50225266	
1	N3A	W/B	SUCTION > PRESSURE	50225307	
1	N4A	W/B	1ST INTRSTG > PRESSURE	50225307	
1	N5A	W/B	2ND INTRSTG > PRESSURE	50225307	
1	N6A	W/B	DISCHARGE > PRESSURE	50225307	
1	N7A	W/B	ENG JACKET > WATER PRESS	50225307	
1	N8A	W/B	ENGINE OIL > PRESSURE	50225307	
1	N9A	W/B	COMPR OIL > PRESSURE	50225307	



DRAWN BY: VJS

CHK'D BY:

APP'D BY:

DATE: 04-28-06

SCALE: 3/16"

SHEET 1 OF 1

MURPHY
CONTROL SYSTEMS & SERVICES - ROSENBERG, TX

PANEL LAYOUT

YOUR NO. 05-512 REF No. 50305027

DWG. NO. 50-29-6090A 0

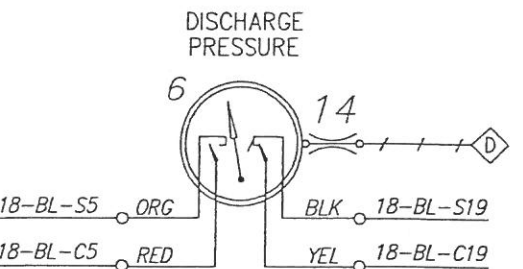
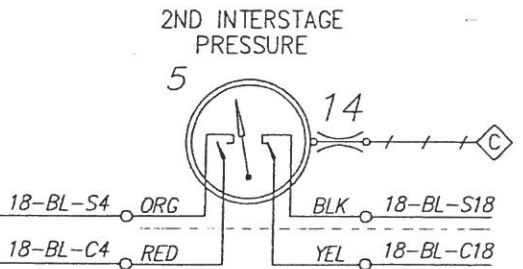
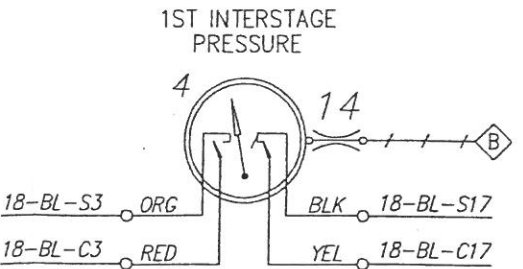
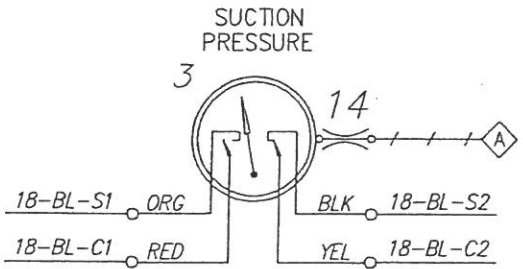
PANEL LEGEND

ITEM	PART No.	QTY.	MFR.	MODEL NO.	DESCRIPTION
1.	50700597	1	MURPHY	TTD-H	"SELECTRONIC TATTLETALE" ANNUNCIATOR
	50700594	1	MURPHY	PSU-2-T	ANNUNCIATOR POWER SUPPLY
2.	50225495	1	MURPHY	50225495	LEGEND HOLDER W/306090.xls INSERT
3.	05702717	1	MURPHY	45APEF-S-100	SUCTION PRESSURE "SWICHGAGE"
4.	05702723	1	MURPHY	45APEF-S-300	1ST INTERSTAGE PRESSURE "SWICHGAGE"
5.	05702724	1	MURPHY	45APEF-S-600	2ND INTERSTAGE PRESSURE "SWICHGAGE"
6.	05702725	1	MURPHY	45APEF-S-1500	DISCHARGE PRESSURE "SWICHGAGE"
7.	-----	-	-----	-----	-----
8.	-----	-	-----	-----	-----
9.	05704374	1	MURPHY	A25PE-100	COMPRESSOR OIL PRESSURE "SWICHGAGE"
10.	-----	-	-----	-----	-----
11.	10703916	1	MURPHY	A25TEF-350-25-1/2	1ST STAGE DISCHARGE TEMPERATURE "SWICHGAGE"
12.	10703916	1	MURPHY	A25TEF-350-25-1/2	2ND STAGE DISCHARGE TEMPERATURE "SWICHGAGE"
13.	10703916	1	MURPHY	A25TEF-350-25-1/2	3RD STAGE DISCHARGE TEMPERATURE "SWICHGAGE"
14.	00009141	4	DELTRON	N20SK	NEEDLE VALVE
15.	50225417	1	HOFFMAN	A-302408LP	ENCLOSURE, ENC-P-H-A302408LP-MR
16.	50220501	1	MURPHY	50220501	STAND, STD-P-22X24X9-4PDF-MR
17.	50225085	1	HOFFMAN	A-30P24	SUBPANEL, 21 X 27
18.	-----	1	-----	-----	PUSH TO START PUSHBUTTON (CUSTOMER INSTALLED)
19.	-----	1	AMP	-----	5PT TERMINAL BLOCK
20.	50235347	1	MURPHY	-----	T-VENT ASSEMBLY

- NOTES:
- FACTORY WIRING: _____
CUSTOMER WIRING: _____
END USER WIRING: _____
TUBING: _____
 - TUBING: 1/4 X .035 316 STAINLESS STEEL (FLEX)
FITTINGS: STEEL SWAGelok (FNPT BULKHEADS)
 - "18-BL-25" REPRESENTS "AWG-WIRE COLOR-WIRE NUMBER"
 - ROUTE SENSOR LEADS SEPARATE FROM ALL OTHER WIRING.
 - MAXIMUM LENGTH OF SENSOR LEADS IS 500 FEET.
 - CAUTION: DISCONNECT ALL SENSOR LEADS BEFORE WELDING.
 - THIS PANEL IS SUITABLE FOR USE IN CLASS I, DIV. 2, GROUP C&D HAZARDOUS LOCATIONS.
 - GROUND SYMBOLS WILL BE SHOWN PER THE FOLLOWING:
EARTH/NON-INCENDIVE CHASSIS/NON-INCENDIVE DC COM/CLOSE LOOP

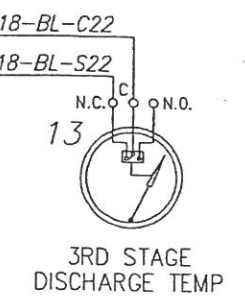
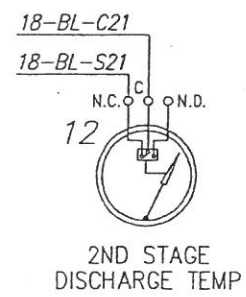
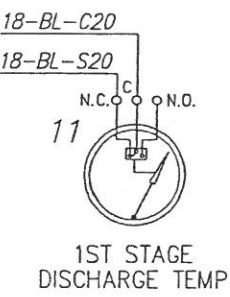
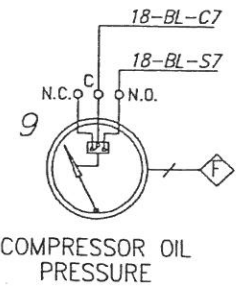


 - UNLESS OTHERWISE NOTED ALL DEVICES ARE SHOWN IN THE SHELF POSITION.
 - ALL WIRING TO BE 18 GA. UNLESS OTHERWISE NOTED.
 - EACH OF THE FIRST 48 INPUTS CAN BE CONFIGURED FOR CLASS A, B1, B2, C, FOR ALARM OR SHUTDOWN, OR AS IGNORE, OR SPECIAL LOCKOUT. SPARE SHUTDOWNS WILL BE DEFAULTED TO CLASS "A".
 - SET B2 TIMERS @ 30 SECONDS.
INPUT #45 IS SELECTABLE REMOTE RESET OR CLASS "A"
INPUT #46 IS SELECTABLE REMOTE LOCKOUT OR CLASS "A"
(INHIBITS CLASS "B1" & "B2" LOCKOUT TIMERS)
INPUT #47, #48 TYPICALLY USED FOR EMERGENCY STOP (OVERRIDES TEST TIMER)
DISPLAY #49 IS LOSS OF IGNITION (LESS THAN 90 VDC)
DISPLAY #50 IS OVERSPEED (INTERNAL, ON "T" MODEL ONLY)
DISPLAY #51 IS UNDERSPEED (ON "T" MODEL ONLY)
DISPLAY #52 IS MANUAL STOP (INTERNAL)
DISPLAY #60 WATCHDOG TIMER
DISPLAY #61 LOSS OF SP1 LINK (INTERNAL, ON "T" MODEL ONLY)
DISPLAY #62 LOW DC VOLTAGE (ALARM)
DISPLAY #63 LOW BACKUP BATTERY (ALARM)
 - SENSOR INPUTS ARE PASSIVE SWITCHES. REMOVE FACTORY INSTALLED JUMPER FOR NORMALLY CLOSED SWITCHES.
 - NORMALLY OPEN SENSORS ARE RETURNED TO GROUND TO ACTIVATE ANNUNCIATOR.
 - FOR ADDITIONAL INFORMATION REFER TO INSTALLATION BULLETIN.
 - CONNECT POWER LEADS DIRECTLY TO BATTERY POSTS




PROJECT NAME: Itarmattan
DATE: Oct 13/06 RS/RB
PROJECT #: 65037 Prospec

VENDOR TO PROCEED AS NOTED
☐ APPROVED FOR CONSTRUCTION.
☐ APPROVED FOR CONST. AS NOTED
☐ REVISE AND RESUBMIT AS NOTED
SIGNED: _____
DATE: _____



INSTALL FLEX HOSE ONLY ON BULKHEAD H, J, & K

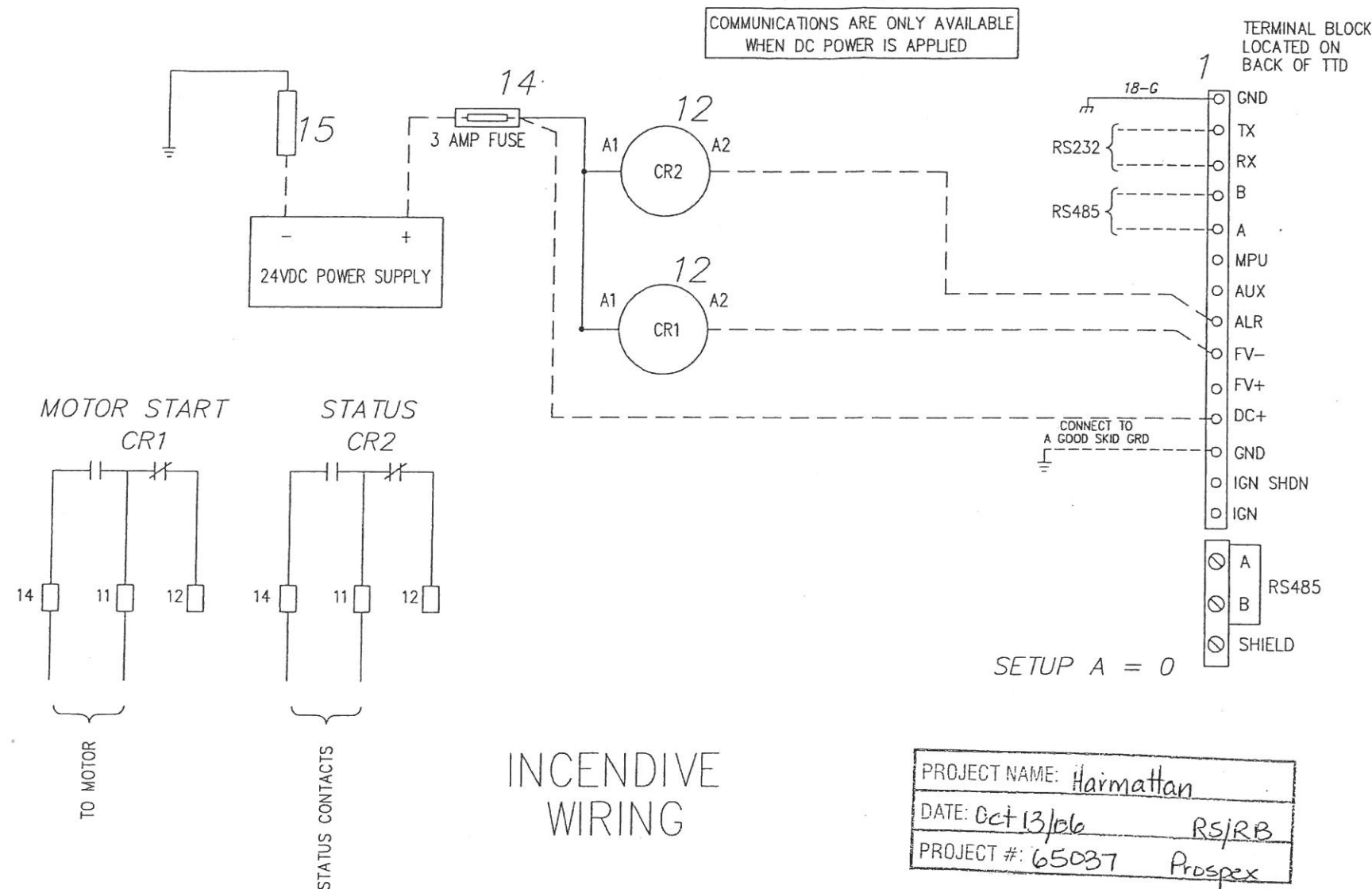
				DRAWN BY VJS		 CONTROL SYSTEMS & SERVICES - ROSENBERG, TX
				CHK'D BY		
				APP'D BY		
				DATE 04-28-06		
				SCALE NONE		FOR
				SHEET 1 OF 2		
0	FIELD CHANGES	25 SEP 06	DATE	CHK BY	LEGEND, NOTES & PNEUMATICS	
A	AS BUILT	05-25-06	DATE	CHK BY	YOUR NO. 05-512 REF NO. 50305027	
THIS DOCUMENT, DRAWING, SKETCH, OR SCHEMATIC PLAN IS THE PROPERTY OF FRANK W. MURPHY MFR. AND COVERS SWITCHGAGE®, CONTROLS AND/OR CIRCUIT ON WHICH U.S. & FOREIGN PATENTS HAVE BEEN ISSUED OR APPLIED FOR. NO PART MAY BE REPRODUCED OR USED WITHOUT THE CONSENT OF THE OWNER.						DWG. NO. 50-30-6090A
MURPHY MFR. IS NOT RESPONSIBLE FOR COPIES OF THIS DRAWING NOT HAND SIGNED BY OUR ENGINEERS.						REV. 0

INDICATOR READOUTS 306090.xls

CLASS DISPLAY DESCRIPTION

B1	01	LOW SUCTION PRESSURE	01	1B-BL-C1	3
B1	02	HIGH SUCTION PRESSURE	02	1B-BL-S1	3
B1	03	LOW 1ST INTERSTAGE PRESSURE	03	1B-BL-C2	4
B1	04	LOW 2ND INTERSTAGE PRESSURE	04	1B-BL-S2	5
B1	05	LOW DISCHARGE PRESSURE	05	1B-BL-C3	6
	06			1B-BL-S3	
B2	07	LOW COMPRESSOR OIL PRESSURE	07	1B-BL-C4	9
	08			1B-BL-S4	
B2	09	LUBRICATOR NO-FLOW	09	1B-BL-C5	
	10			1B-BL-S5	
	11				
	12				
	13				
	14				
	15				
	16				
A	17	HIGH 1ST INTERSTAGE PRESSURE	17	1B-BL-C7	4
A	18	HIGH 2ND INTERSTAGE PRESSURE	18	1B-BL-S7	5
A	19	HIGH DISCHARGE PRESSURE	19	1B-BL-C8	6
A	20	HIGH 1ST STAGE DISCHARGE TEMPERATURE	20	1B-BL-S8	11
A	21	HIGH 2ND STAGE DISCHARGE TEMPERATURE	21	1B-BL-C9	12
A	22	HIGH 3RD STAGE DISCHARGE TEMPERATURE	22	1B-BL-S9	13
	23			1B-BL-C10	
	24			1B-BL-S10	
A	25	LOW COMPRESSOR OIL LEVEL	25	1B-BL-C11	
	26			1B-BL-S11	
A	27	HIGH 1ST STAGE SCRUBBER LIQUID LEVEL	27	1B-BL-C12	
A	28	HIGH 2ND STAGE SCRUBBER LIQUID LEVEL	28	1B-BL-S12	
A	29	HIGH 3RD STAGE SCRUBBER LIQUID LEVEL	29	1B-BL-C13	
A	30	MOTOR VIBRATION	30	1B-BL-S13	
A	31	COMPRESSOR VIBRATION	31	1B-BL-C14	
A	32	COOLER VIBRATION	32	1B-BL-S14	
	33				
	34				
	35				
	36				
	37				
	38				
	39				
	40				
	41				
	42				
	43				
	44				
	45				
	46				
ESD	47	EMERGENCY STOP	47		
	48		48		
B	49	LOSS OF IGNITION (LESS THAN 90 VDC)			
A	50	OVERSPEED			
B	51	UNDERSPEED			
A	52	MANUAL STOP			
A	60	WATCHDOG TIMER			
A	61	LOSS OF SP1 LINK			
B	62	LOW DC VOLTAGE (ALARM)			
A	63	LOW BACKUP BATTERY (ALARM)			

1B1 TERMINAL BLOCK LOCATED ON BACK OF TTD



INCENDIVE WIRING

PROJECT NAME: Harmattan
DATE: Oct 13/06
PROJECT #: 65037
RS/RB
Prosper

VENDOR TO PROCEED AS NOTED
☐ APPROVED FOR CONSTRUCTION.
☐ APPROVED FOR CONST. AS NOTED
☐ REVISE AND RESUBMIT AS NOTED

SIGNED: _____
DATE: _____

DRAWN BY VJS				MURPHY	
CHK'D BY				CONTROL SYSTEMS & SERVICES - ROSENBERG, TX	
APPD BY					
DATE 04-28-05					
SCALE NONE					
REV. DESCRIPTION DCN No. DATE CHK'D BY SHEET 2 OF 2				WIRING DIAGRAM	
THIS DOCUMENT, DRAWING, SKETCH, OR SCHEMATIC PLAN IS THE PROPERTY OF FRANK W. MURPHY MFR. AND COVERS SWITCHGEAR®, CONTROLS AND/OR CIRCUIT ON WHICH U.S. & FOREIGN PATENTS HAVE BEEN ISSUED OR APPLIED FOR. NO PART MAY BE REPRODUCED OR USED WITHOUT THE CONSENT OF THE OWNER.				YOUR NO. 05-512 REF NO. 50305027	
MURPHY MFR. IS NOT RESPONSIBLE FOR COPIES OF THIS DRAWING NOT HAND SIGNED BY OUR ENGINEERS.				DWG. NO. 50-30-6090B REV. 0	