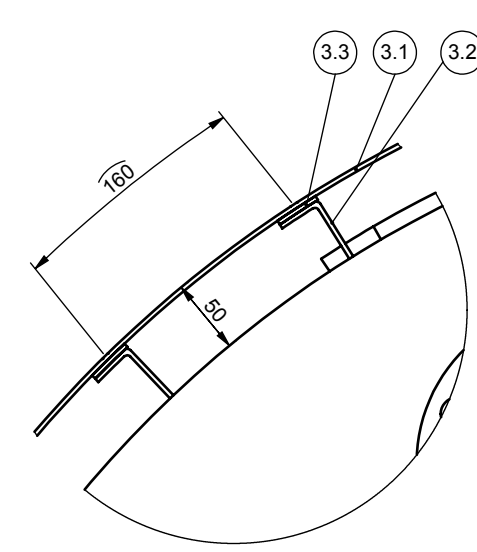
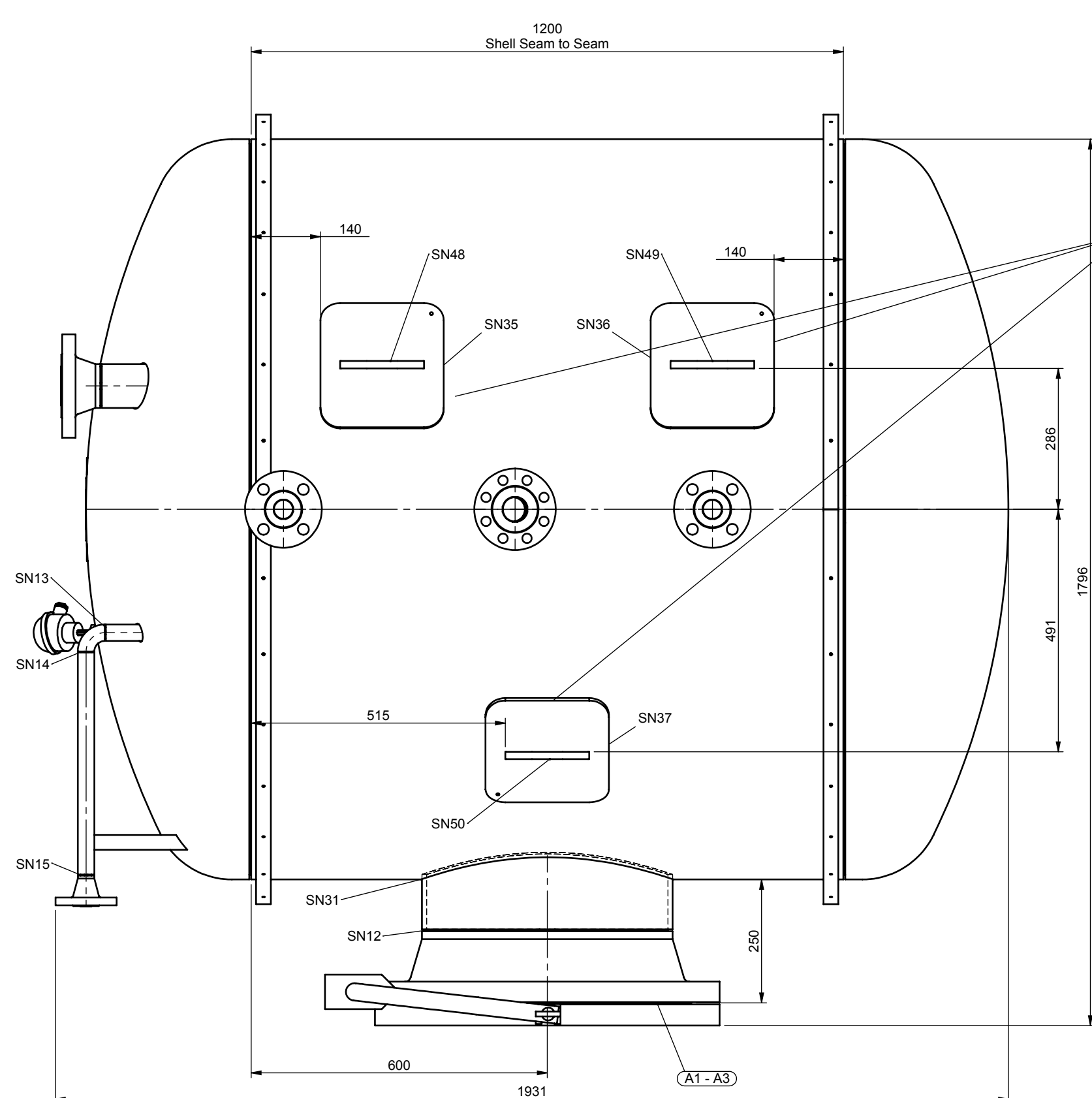


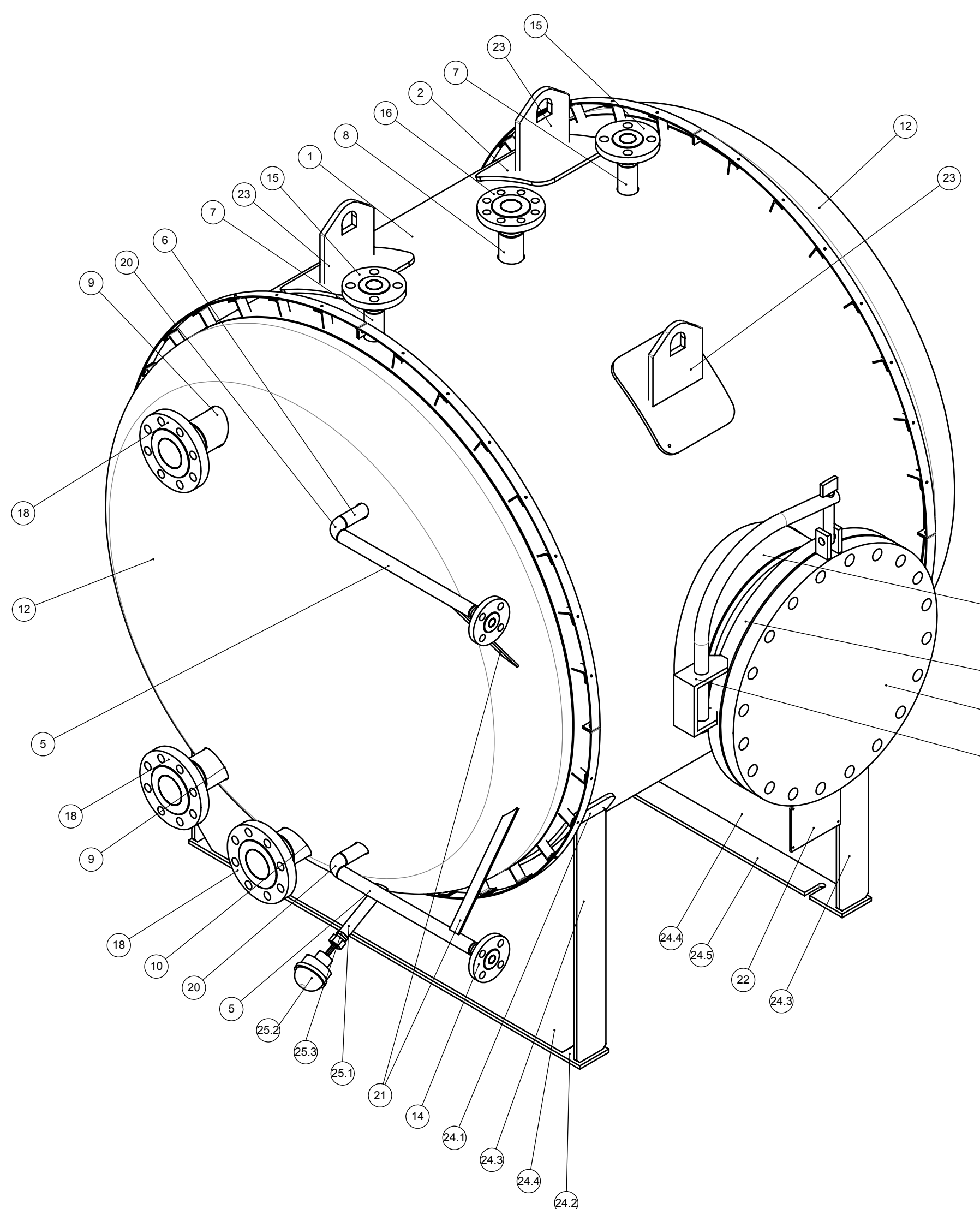
Pos. no. Item no.	Stick Piece	Benennung Designation	Large Length	Norm/Standard	Werkstoff/Nr Material/Code	Materialbezugs MTR
1	1	Blech/Sheet plate	4678x1200x10 mm	SA 20	SA-516 Gr.60	3.1
2	3	Blech/Sheet plate	250x273x10 mm	SA-20	SA-516 Gr.60	Stempel / stamp
3	2	Isulierungsstützring/Insulation support ring				
3.1	4	Blech/Sheet plate	30x200x3 mm		S235JR / EN10025-2	
3.2	28	Blech/Sheet plate	30x73x3 mm		S235JR / EN10025-2	
3.3	28	Isoliert/Insulating band			Gastofen/Fiber glass	
4	1	Rohr / Tube Ø26,75,56mm - 3/4" Sch.160	102	B 36.10	SA-106 Gr. B	Stempel / Stamp
5	2	Rohr / Tube Ø33,4x,35mm - 1" Sch.160	90	B 36.10	SA-106 Gr. B	Stempel / Stamp
6	2	Rohr / Tube Ø33,4x,35mm - 1" Sch.160	88	B 36.10	SA-106 Gr. B	Stempel / Stamp
7	2	Rohr / Tube Ø48,3x,50mm - 1 1/2"XS	90	B 36.10	SA-106 Gr. B	Stempel / Stamp
8	1	Rohr / Tube Ø60,3x,54mm - 2"Sch.80	88	B 36.10	SA-106 Gr. B	Stempel / Stamp
9	2	Rohr / Tube Ø68,9x,45mm - 3"Std.	108	B 36.10	SA-106 Gr. B	Stempel / Stamp
10	1	Rohr / Tube Ø88,9x,49mm - 3"Std.	86	B 36.10	SA-106 Gr. B	Stempel / Stamp
11	2	Rohr / Tube Ø508,9x,20mm - 20"Std.	158	B 36.10	SA-106 Gr. B	Stempel / Stamp
12	1	Kloppebenen head Ø1500x10		DIN 28011	SA-516 Gr. 60	3.1
13	1	V-Fansch/welding neck flange DN20 - 3/4" 300lbs RF Sch.160		B 16.5	SA-105 N	Stempel / stamp
14	2	V-Fansch/welding neck flange DN25 - 1" 300lbs RF Sch.160		B 16.5	SA-105 N	Stempel / stamp
15	2	V-Fansch/welding neck flange DN40 - 1 1/2" 300lbs RF Sch.80 /XS		B 16.5	SA-105 N	Stempel / stamp
16	2	V-Fansch/welding neck flange DN50 - 2" 300lbs RF Sch.80 /XS		B 16.5	SA-105 N	Stempel / stamp
17	1	V-Fansch/welding neck flange DN500 - 20" 150lbs RF Std.		B 16.5	SA-105 N	Stempel / Stamp
18	3	V-Fansch/welding neck flange DN80 - 3" 300lbs RF Std.		B 16.5	SA-105 N	Stempel / stamp
19	1	Blindflansch / Blind flange DN500 - 20" 150lbs RF		B 16.5	SA-105 N	Stempel / stamp
20	2	Rohrbogen / Elbow 90° DN25 - 1"Sch.160		B16.5	SA-20 A1913	Stempel / Stamp
21	2	Blech/Sheet plate	30x340x5 mm		P265GH / EN10028-2	Stempel / Stamp
22	1	Typenschild Fahne / nameplate flag	170x170x4		P265GH / EN10028-2	Stempel / Stamp
23	3	Blech/Sheet plate 200x170x5		SA-20	SA-516 Gr.60	
24	1	Behälterflur / Vessel support				
24.1	2	Blech/Sheet plate	1650x160x5 mm	SA-20	SA-516 Gr.60	Stempel/Stamp
24.2	1	Blech/Sheet plate	1340x100x10 mm	SA-20	SA-516 Gr.60	Stempel/Stamp
24.3	4	Blech/Sheet plate	707x100x10 mm	SA-20	SA-516 Gr.60	Stempel/Stamp
24.4	2	Blech/Sheet plate	1300x670x10 mm	SA-20	SA-516 Gr.60	Stempel/Stamp
24.5	1	Blech/Sheet plate	1300x100x10 mm	SA-20	SA-516 Gr.60	Stempel/Stamp
25	1	174753A1 Emerson PT100				
25.1	1	Rohr / Tube Ø26,75,56mm - 3/4" Sch.160	170	B 36.10	SA-106 Gr. B	Stempel / Stamp
25.2	1	Emerson PT100 31175183				
25.3	1	Schutzmulde/protection pocket PT100				
25.4	1	Dichtungssattel PT100				
26	1	Schwenkarm DN500 / Sylevel arm 20"				

Norm / Standard	Jahr / Year
B16.5	2013
B16.9	2012
B16.11	2011
B16.20	2012
B16.47	2011
B36.10	2015

Flanschverbindungen / flange connections						
Pos.Nr. Item no.	Stück Piece	Benennung Designation	Länge Length	Norm/Standard	Werkstoff/Norm Material/Code	Materialzeugnis MTR
A1	1	Spiralringabschlichtung / Spiral Wound Gasket DN500 Class 150 RF SPWD 30MS5, Flex, Graphite Fiber, C.S. Centering Ring		B16.20		
A2	20	Gewindebolzen/stift bolts 1 1/8"	175		SA-193 Gr.B7	Stempel/stamp
A3	40	Sechskantmutter/hexagon nut 1 1/8"			SA-194 Gr.28	Stempel/stamp



B (1 : 5)



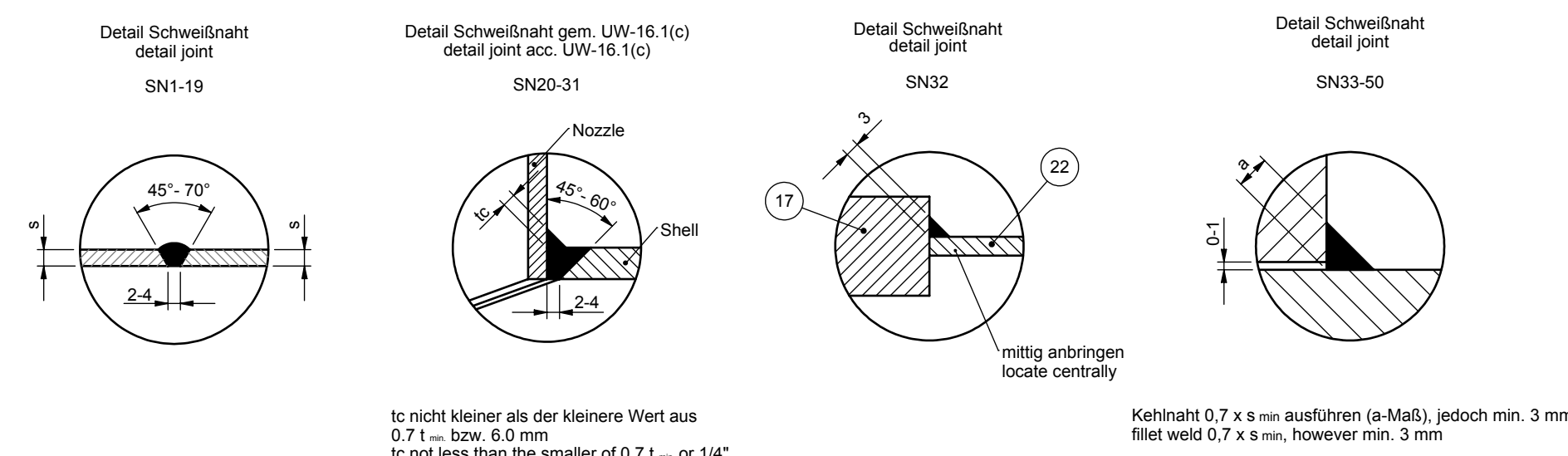
Gewindebolz
stud bolts

General Notes:

- 1) Indoor installation
- 2) Insulation 50 mm
- 3) No outer or inner coating
- 4) Lifting lug impact factor = 2
- 5) Add CRN to name plate when it has been issued

Leergewicht / Empty weight: ca. 1500 kg

Betriebsgewicht / Operating weight: ca. 4330 kg



 				Status: 1:10 Land: Canada Koen.Nr.: 174753 Koen.Nr.: 174753	
21 Accord. to comments 25.07.17 Owen Datumsdate: Name:Name 22 Accord. to comments 10.08.17 Ho 18.07.2017 23 Accord. to comments 17.08.17 Ho 24 Item 3.1.3.2.21.22rev 17.08.17 Ho 25 pos 12 head typ 20.10.17 Owen 26 27 28 29		Konstruktionsdesign: Owen Zeichnung.Nr.: drawings:		Ausdehnungs- und Abfallschaltler Expansion and collection vessel AEVC 2830 30" / Item 1.60 (174753) Rev.5 Zeichnung.Nr.: drawings:	
Pos.Nr. Ausdehnungsrichtung Datumsdate Name:Name Date:Date Drawing: 1747533-AEV_AVC_Kombi_2830				Drawing: 1747533-AEV_AVC_Kombi_2830	