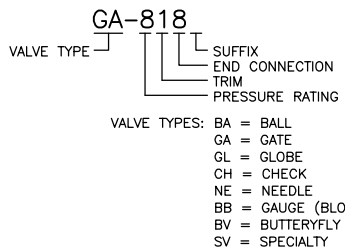


VALVE TAGGING



PRESSURE RATINGS: 1 = CL150 ANSI
3 = CL300 ANSI
6 = CL600 ANSI
8 = 800# API
9 = CL900 ANSI
15 = CL1500 ANSI/1500# API
20 = 2000 WOG¹
25 = CL2500 ANSI/2500# API
30 = 3000 WOG¹
40 = 4000 WOG¹
60 = 6000 WOG¹

TRIM: 0 = STANDARD
1 = SOUR
2 = SOUR LOW TEMPERATURE
3 = LOW TEMPERATURE
4 = HIGH TEMPERATURE

END CONN.: 0 = RF
1 = RTJ
6 = SW
7 = NPT x SW
8 = NPT
9 = MNPT x FNPT

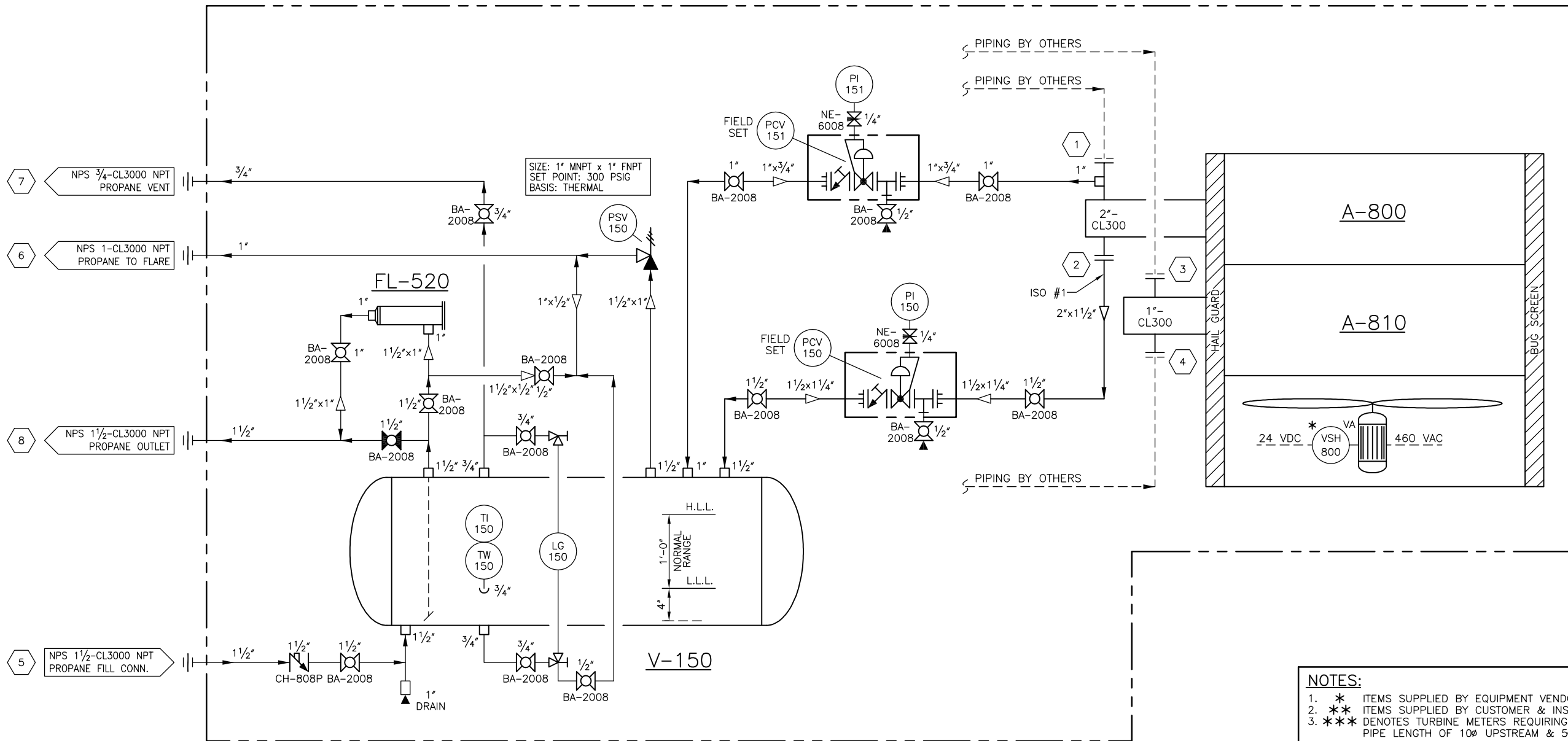
SUFFIX: F = FULL PORT
S = SWING CHECK
P = PISTON CHECK

¹WOG PRESSURE RATINGS ONLY
APPLY TO THREADED AND SOCKET-
WELDED BALL VALVES.

FL-520
PROPANE DRIER
SPORLAN C-1448
W/ (3) RCW-48 CORE ELEMENTS
300 PSIG D.P.

A-800/810
PROPANE CONDENSER/PRODUCT COOLER
ACE E-54-7 AERIAL COOLER C/W
15 H.P. 3/60/460 VAC TEFC MOTOR
BUG SCREEN AND HAIL GUARD
A-800: 300 PSIG D.P. + 1/16" C.A. (338,295 BTU/HR DUTY)
A-810: 400 PSIG D.P. + 1/16" C.A. (44,000 BTU/HR DUTY)

V-150
PROPANE ACCUMULATOR
20" O.D. x 8'-0" S/S
300 PSIG D.P. @ -20°/150° F + 1/16" D.A.
NON-CORROSIVE SERVICE



NOTES:

1. ** ITEMS SUPPLIED BY EQUIPMENT VENDOR.
2. ** ITEMS SUPPLIED BY CUSTOMER & INSTALLED BY ALCO.
3. *** DENOTES TURBINE METERS REQUIRING A MIN. STRAIGHT PIPE LENGTH OF 10' UPSTREAM & 5' DOWNSTREAM.

TWO (2) UNITS REQUIRED

GENERAL LEGEND:

1. --//-- DENOTES PNEUMATIC TIE-IN.
2. --//#-- DENOTES PNEUMATIC COMPRESSOR PANEL TIE-IN.
3. --X-- DENOTES CAPILLARY TIE-IN.
4. --- DENOTES ELECTRICAL TIE-IN (BY OTHERS).
5. ---◇--- DENOTES ELECTRICAL JUNCTION BOX TIE-IN.
6. ---◇--- DENOTES LOCAL PLC TIE-IN (BY OTHERS).
7. ---◇--- DENOTES LOCAL ELECTRICAL PANEL TIE-IN.
8. INST TAG DENOTES FIELD MOUNTED INSTRUMENT.
9. INST TAG DENOTES LOCAL PANEL INSTRUMENT.
10. INST TAG DENOTES LOCAL PANEL INSTRUMENT. (MOUNTED INSIDE PANEL)

B-2009-7995-50B	BILL OF MATERIALS	0	2009-06-10	RWM	ISSUED FOR CONSTRUCTION
D-2009-7995-50A-001	LAYOUT/ASSEMBLY				
DWG.	DESCRIPTION	REV.	DATE	REV. BY	DESCRIPTION
REFERENCE DRAWINGS		REVISIONS			

DRAWN	RWM	<div><div>ALCO</div><div><div></div><div></div><div></div></div><div>GAS & OIL PRODUCTION EQUIPMENT LTD.</div></div> <div>The information contained herein is the confidential property of Alco Gas and Oil Production Equipment Ltd., and is not for publication. The information is issued on the understanding that no part thereof shall be copied or communicated to a third party without authorization in writing from Alco Gas and Oil Production Equipment Ltd.</div>
DATE	2009-05-22	
SCALE	NTS	
CHK'D		
<div>MECHANICAL FLOWSHEET REFRIGERANT CONDENSER PACKAGE w/ 20" O.D. x 8'-0" S_s HORIZ. PROPANE ACCUMULATOR</div>		
LOCATION: FOR STOCK		
CUSTOMER: GUNNING SERVICES INC.		
DWG/SHOP ORDER: C-2009-7995-50F-001/001		REV. 0