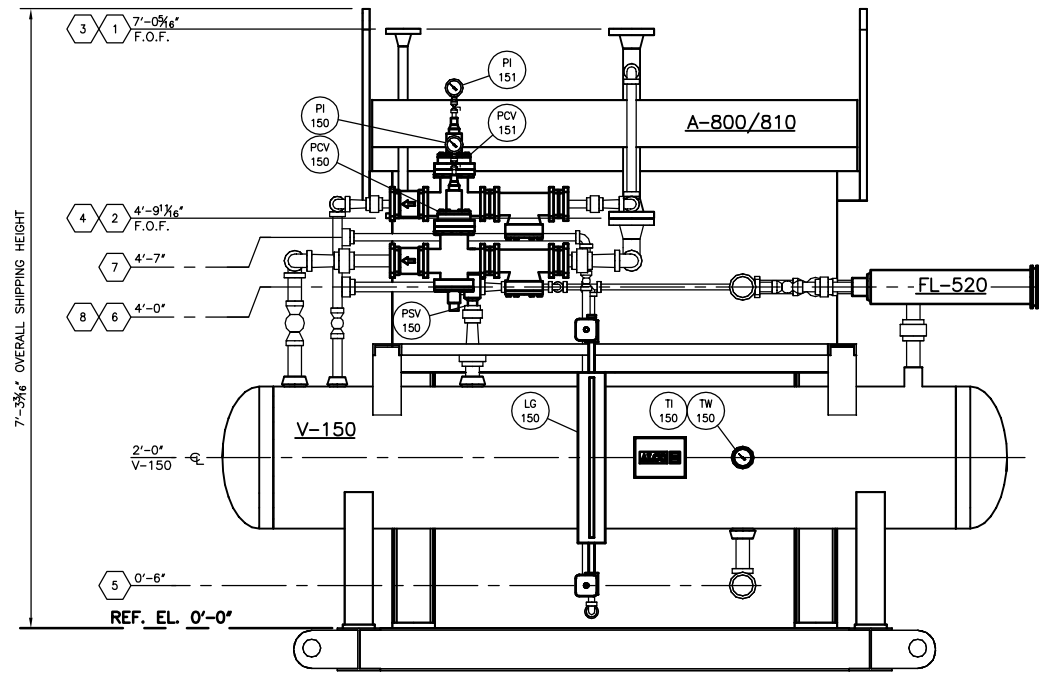


GENERAL NOTES:

- THIS DRAWING IS TO BE READ IN CONJUNCTION WITH THE MECHANICAL FLOWSHEET.
- PROCESS PIPING TO BE DESIGNED TO ASME B31.3 2008 EDITION.
- PRESSURE VESSELS ARE TO BE REGISTERED IN ALBERTA.
- VESSELS AND PIPING TO BE INSULATED AS PER FLOWSHEET AND/OR FABRICATION DRAWINGS.
- PAINTING: SURFACE PREPARATION: COMMERCIAL SANDBLAST TO SSPC-SP6.
PRIMER: 1s/c CLOVERDALE #T-101 ZINC PHOSPHATE GREY OVERALL.
FINISH PAINT: 1s/c CLOVERDALE SERIES #111 WARM GREY (#20-F-34) MARINE ENAMEL.
- ALL ELEVATIONS SHOWN ARE FROM TOP OF MAIN SKID MEMBERS. DEPTH OF SKID IS 0'-6\"/>
- ALL SKID EDGE CONNECTIONS TO BE HELD AT DIMENSIONS AND ELEVATIONS SHOWN FOR CUSTOMER TIE-INS.
- SKID IS DESIGNED FOR A FOUR (4) POINT LIFT.
- I/A SERVICE VENTING: METER RUN MANIFOLD(S) ARE VENTED INDIVIDUALLY O/S BUILDING. BLEED TYPE INSTRUMENTS, REGULATOR BONNETS, INSTRUMENT CASES AND CONTROL VALVE ACTUATORS ARE NOT VENTED.
- REMOVE ALL FLOATS/DISPLACERS FROM ALL LEVEL CONTROLLERS AND SWITCHES. TAG AND CRATE FOR SHIPPING.
- ALL P.I. AND T.I. LOCATIONS ARE PROVIDED WITH SS TAGS FOR FIELD RE-INSTALLATION.
- PROTECT ALL OPENINGS FOR SHIPPING.
- ESTIMATED SHIPPING WEIGHT: 7,240 lbs.
- ONE (1) OPERATING MANUALS AND ONE (1) QUALITY CONTROL DATA BOOKS ARE PROVIDED.

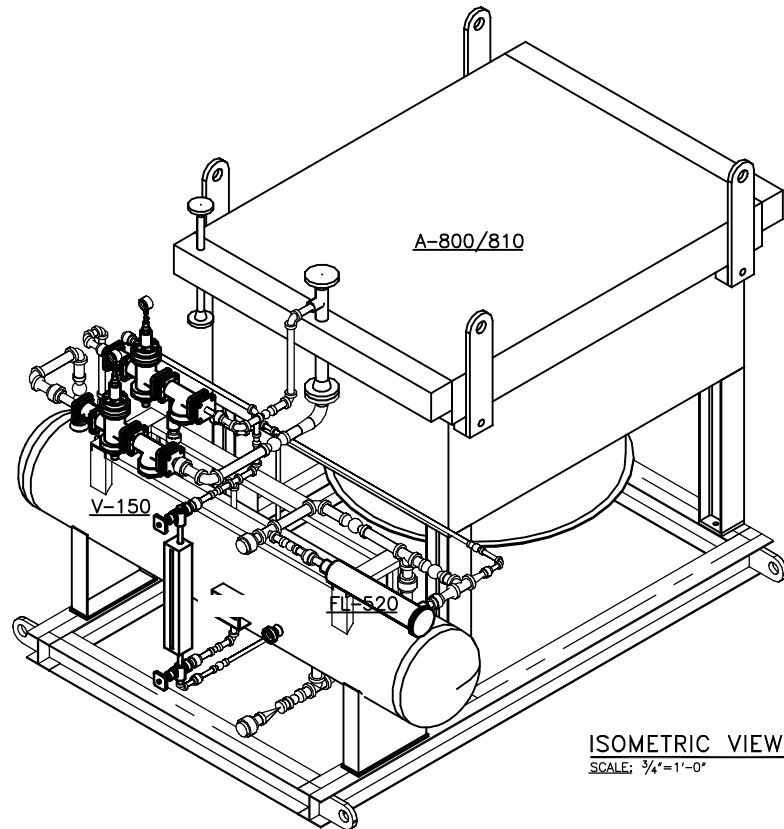
TIE-IN SCHEDULE:

- | | |
|---|---|
| 1 | NPS 2-CL300 ANSI RFWN (A-800) PROPANE INLET, F.O.F. @ ELEV. 7'-0 5/16" |
| 2 | NPS 2-CL300 ANSI RFWN (A-800) PROPANE OUTLET, F.O.F. @ ELEV. 4'-9 1/16" |
| 3 | NPS 1-CL300 ANSI RFWN (A-810) PRODUCT INLET, F.O.F. @ ELEV. 7'-0 5/16" |
| 4 | NPS 1-CL300 ANSI RFWN (A-810) PRODUCT OUTLET, F.O.F. @ ELEV. 4'-9 1/16" |
| 5 | NPS 1 1/2-CL3000 NPT PROPANE FILL, @ ELEV. 0'-6" |
| 6 | NPS 1-CL3000 NPT PROPANE TO FLARE, @ ELEV. 4'-0" |
| 7 | NPS 3/4-CL3000 NPT PROPANE VENT @ ELEV. 4'-7" |
| 8 | NPS 1 1/2-CL3000 NPT (V-150) PROPANE OUTLET, @ ELEV. 4'-0" |



SECTION "A-A"

SCALE: 1"=1'-0"

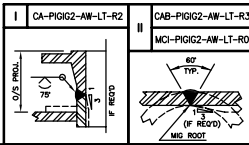


ISOMETRIC VIEW

SCALE: 3/4"=1'-0"

CL300 (PROPANE/CONDENSATE)	
DESIGN CONDITIONS:	300 PSIG @ -20/150°F
D.P. & TEMP.	300 PSIG @ -20/150°F
BW C.A.	1/16"
NPT/SW C.A.	0"
RADIOGRAPHY	5% TO ASME B31.3
P.W.H.T.	NONE
* HYDROTEST	1.5 TIMES D.P.
PIPING:	
** BW PIPING	1 1/2" SCH. XH SA-106-B
	2" SCH. STD SA-106-B
SW PIPING	-
NPT PIPING	≤ 1 1/2" SCH. XH SA-106-B
INSTRUMENT TUBING	3/8" O.D. 316 S.S. (0.035")
PROCESS TUBING	3/8" O.D. 316 S.S. (0.035")
FITTINGS:	
BW FITTINGS	1 1/2" SCH. XH SA-234-WPB
	2" SCH. STD SA-234-WPB
SW FITTINGS	-
NPT FITTINGS	≤ 1 1/2" CL3000 SA-105
FLANGES	RFWN BORE TO PIPE, SA-105
GASKETS	1/8" THK. CG FLEXITE SUPER FLEXITALLIC 304SS
BOLTING	SA-193-B7/SA-194-2H
PUMP/L.G. NIPPLES	SCH. 160, SA-333-GR.6
INSTR. TUBING FITTINGS	316 S.S. SWAGelok
PROCESS TUBING FITTINGS	316 S.S. SWAGelok

- *LOW PRESSURE NPT/SW PIPING IS AIR TESTED AT 100 PSIG.
- **PIPE SCHEDULE IS SELECTED BASED ON PRESSURE AND CORROSION LIMITS.
- ***ALLOW 1/16" GAP IN SOCKET WELDING.



CA-PIG02-AW-LT-R2		CAB-PIG02-AW-LT-R3	
MCI-PIG02-AW-LT-R0		MCI-PIG02-AW-LT-R0	
C-2008-7995-50F-001		MECHANICAL FLOWSHEET	
DWG.		DESCRIPTION	
REFERENCE DRAWINGS		REVISIONS	

TWO (2) UNITS REQUIRED

DRAWN	RWM
DATE	2009-05-21
SCALE	SHOWN
CHK'D	



LAYOUT/ASSEMBLY	
REFRIGERANT CONDENSER PACKAGE	
w/ 20" O.D. x 8'-0" 3/8" HORIZ. PROPANE ACCUMULATOR	
LOCATION: FOR STOCK	
CUSTOMER: GUNNING SERVICES INC.	
DWG/SHOP ORDER:	D-2009-7995-50A-001/001
REV.	0