

THIS DRAWING IS THE PROPERTY OF [redacted] AND CANNOT BE REPRODUCED IN ANY MANNER WITHOUT WRITTEN AUTHORIZATION FROM [redacted]

CADD DRAWING - DO NOT MANUALLY CHANGE

V-001
VERTICAL SEPARATOR
16" X 7'-6"
1440 PSIG @ 100 F
BY PENFARCO

(3) phase
dressed (2) phase
RT-2
1/16" CA

V-002
FUEL GAS SCRUBBER
BY PENFARCO
8" X 3'-0"
00PSIG @ 100 F

min 150 #
required

T-001
100 BBL DOUBLE WALL
STORAGE TANK
9'-6" PRIMARY 10' SECONDARY
6'-0" HEIGHT

T-002
500 GALLON METHANOL
STORAGE TANK
BY WESTEEL

H-001
12" X 24" BUILDING HEATER
BY CATADYNE
DUTY: 12,000 BTU/HR

P-001
CVS SERIES 51-5100
C/W MICRO VALVE, 3/8" BUNA
INCL BRASS LINE CHECK

R-001
3 PEN CHART RECORDER
0-1500 PSI STATIC RANGE
0-100 W.C. DIFFERENTIAL
0-150° F TEMPERATURE RANGE

TAG #	DESCRIPTION
PRV.1	FISHER 1/4" 67 AFR C/W VENTED BONNET SPRING RANGE 0-30 PSI
PRV.2	FISHER 'BIG JOE' 630 C/W VENTED BONNET SPRING RANGE 46-95 PSI 1/4" TAPPED BONNET
PRV.3	FISHER 1/4" 67 AFR C/W VENTED BONNET SPRING RANGE 0-100 PSI
BV.001.A	1/4" 2000# THRD RP FUSION/FORTUNE B/V CS BODY STD TRIM
BV.002.A	1/2" 2000# THRD RP FUSION/FORTUNE B/V CS BODY STD TRIM
BV.005.B	1/2" 3000# THRD RP NUTRON B/V NACE BODY AND TRIM
BV.006.A	1" 3000# THRD RP NUTRON B/V CS BODY AND TRIM T3-R10530S
BV.010.A	2" 600 WKM DYNASEAL, TYPE 2R B114, CS-42 BODY, CS BALL/STEM, MODEL 310F B1634
BV.011.A	2" 600 WKM DYNASEAL, TYPE 2R B114, CS-42 BODY, CS BALL/STEM, MODEL 2F B182
BV.012.A	3" 150 WKM DYNASEAL, LOAD LINE VALVE
GV.002.ST	2" 600 VELAN RF FP WCB CS CST BODY S/ C6095
LCV.2	NORRISEAL 1" DUMP VALVE, 1/4" TRIM, 30 PSI MAX INST AIR, MODEL SN40RTV-9BA4
LG.1	DANIEL 42RL LIQUID LEVEL GAUGE 1400PSIG@200' F/ 2000PSIG@100' F
LG.2	KENCO 48" LIQUID LEVEL GAUGE
LLC.1	LEVEL SWITCH, MURPHY Matic L1200N
ESD.1	FISHER LIQUID LEVEL CONTROLLER FSL2-2
ESD.2	ELOMATIC ACTUATOR, TYPE 350 U2A40A 27X2
PSH-1	FISHER TYPE 4150 CONTROLLER

field confirm
capacity
set of
580 #
signal to inlet
ESD

3/8" OD, SS Hg,
0.035" WT
2" X 2" NPT
SET @ 1440 PSIG
seems
big
1" x 1" more
typical
600 INLET

T-002

add 3rd
phase LG

1/2" OD, SS Hg,
0.035" WT

36m comments
06/01/25
2:30 p.m.

add 2nd methanol
pump for
well head

MODEL:	REV #	REV DATE	REV DESCRIPTION	CHECKED	OK'D	REFERENCE DWGS	APPROVAL INITIALS
SERIAL: A#510418							
MANUFACTURE DATE: AUGUST2004							
DJC #: 4077							
CUSTOMER:							

BUILDING LIMITS

PROVIDED BY HEATER
SUPPLIER

1" X 1" NPT
SET @ 1440 PSIG

2" BV.010.A

2" BV.006.A

2" BV.006.A

2" BV.010.A

2" BV.006.A

2" BV.006.A

2" BV.006.A

2" BV.006.A

2" BV.006.A

2" BV.006.A

2" BV.006.A

2" BV.006.A

2" BV.006.A

2" BV.006.A

2" BV.006.A

2" BV.006.A

2" BV.006.A

2" BV.006.A

vent head
safety grill
thermostatic control
24,000 BTU/hr

5' valve manifold

to vessel
LSHH

to vessel
LSHH

to vessel
LSHH

to vessel
LSHH

to vessel
LSHH

to vessel
LSHH

8" VENT

8" THIEF HATCH

incl. gauge
board

30" MANWAY

2" 150

2" 150

2" 150

2" 150

2" 150

2" 150

2" 150

2" 150

2" 150

2" 150

clw governance

details &
settings

all Hg to be
SS clw CAD plotted
Suzuki fittings, 0.035"

Kootenay
Energy Corporation

Poplar Energy

Superior

Stock

Fisher 'D' or equal
upstream PC

Fisher 627, 1" clw 1/8" diam

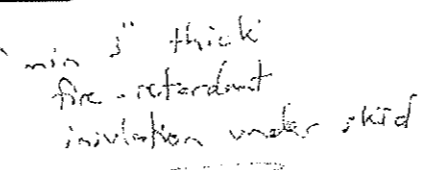
no brass components

insulated
internal coated

24" X 24"

CVS is OK

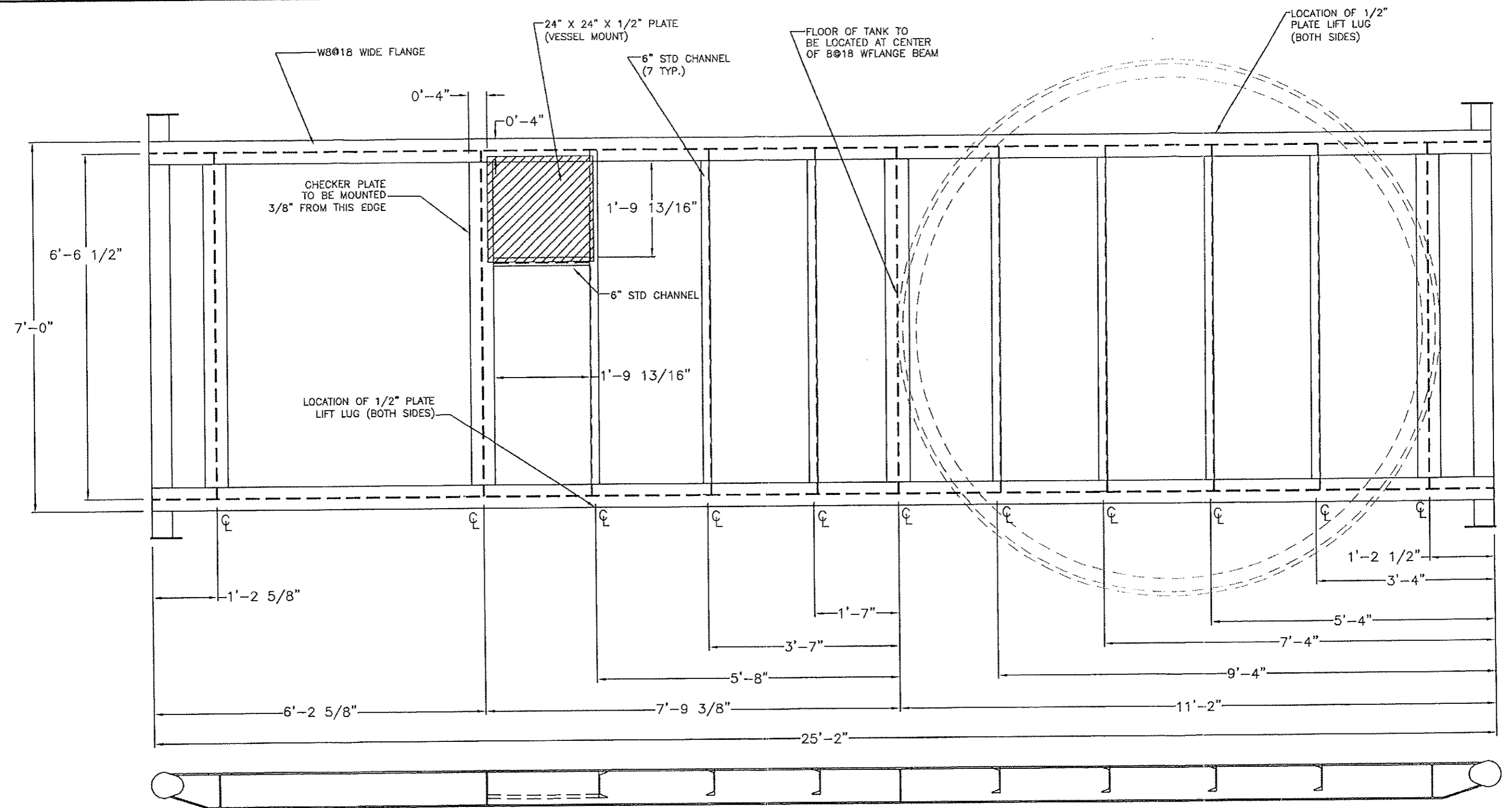
Benton 202E or equal



NOTES:
-ALL NOZLES HAVE A 6" PROJ.
-BUILDING MATERIAL 1 1/2" URETHANE

MODEL:	100 BBL INTEGRATED	REV #	REV DATE	REV DESCRIPTION	CHECKED	OK'D	REFERENCE DWGS	APPROVAL INITIALS
SERIAL:	A# 541534							
MANUFACTURE DATE:	NOV 2005							
DJC #:	5486							
								DRAWING NUMBER

DATE OF LAST SAVE/REVISION:



NOTES:

- ALL WELDING TO CONFORM TO CSA W59, WELDERS AND WELDING OPERATORS SHALL BE CERTIFIED TO THE CANADIAN WELDING BUREAU, IN ACCORDANCE WITH W47.1
- PERIMETER BEAMS TO BE CONTINUOUSLY FILLET WELDED, UNLESS OTHERWISE NOTED

MODEL:	REV #	REV DATE	REV DESCRIPTION	CHECKED	OK'D	REFERENCE DWGS	APPROVAL INITIALS
SERIAL: N/A							
MANUFACTURE DATE: VARIES							
DJC #: N/A							
CUSTOMER: TYPICAL							
							DRAWING NUMBER